

Product datasheet

Anti-WFDC1/PS20 antibody ab230326

★ ★ ★ ★ ★ 1 Abreviews 4 Images

Overview

Product name	Anti-WFDC1/PS20 antibody
Description	Rabbit polyclonal to WFDC1/PS20
Host species	Rabbit
Tested applications	Suitable for: IHC-P, WB, Flow Cyt
Species reactivity	Reacts with: Human
Immunogen	Synthetic peptide within Human WFDC1/PS20 aa 148-177 (C terminal) conjugated to keyhole limpet haemocyanin. The exact sequence is proprietary. Database link: Q9HC57
Positive control	IHC-P: human kidney and liver tissues. WB: HeLa cell lysate. Flow Cyt: HeLa cells.
General notes	This product was previously labelled as WFDC1

Properties

Form	Liquid
Storage instructions	Shipped at 4°C. Store at +4°C short term (1-2 weeks). Upon delivery aliquot. Store at -20°C long term. Avoid freeze / thaw cycle.
Storage buffer	Preservative: 0.09% Sodium azide Constituent: PBS
Purity	Protein A purified
Clonality	Polyclonal
Isotype	IgG

Applications

Our [Abpromise guarantee](#) covers the use of **ab230326** in the following tested applications.

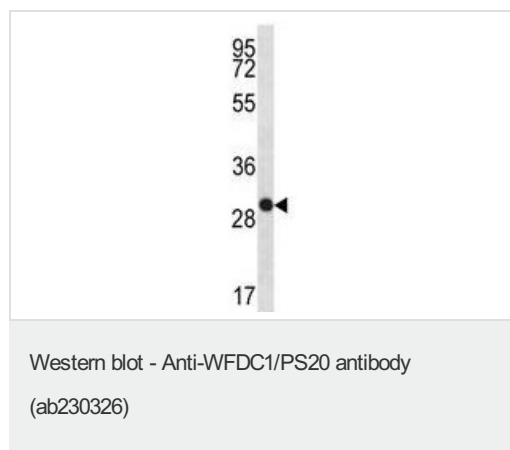
The application notes include recommended starting dilutions; optimal dilutions/concentrations should be determined by the end user.

Application	Abreviews	Notes
IHC-P		1/100.
WB		1/1000. Predicted molecular weight: 24 kDa.
Flow Cyt		1/10 - 1/50.

Target

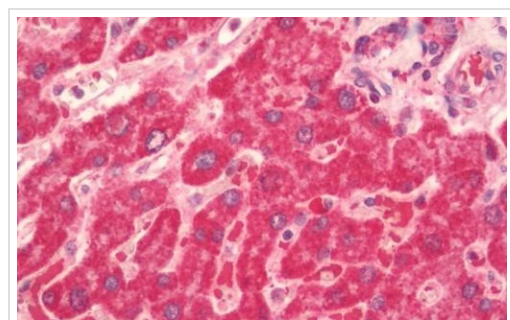
Function	Has growth inhibitory activity.
Sequence similarities	Contains 1 WAP domain.
Cellular localization	Secreted.

Images



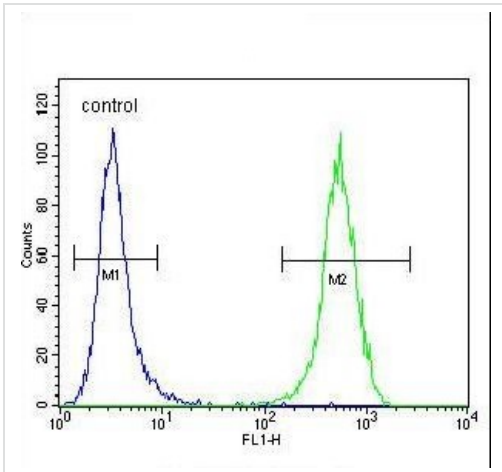
Anti-WFDC1/PS20 antibody (ab230326) at 1/1000 dilution + HeLa (human epithelial cell line from cervix adenocarcinoma) cell lysate at 35 µg

Predicted band size: 24 kDa



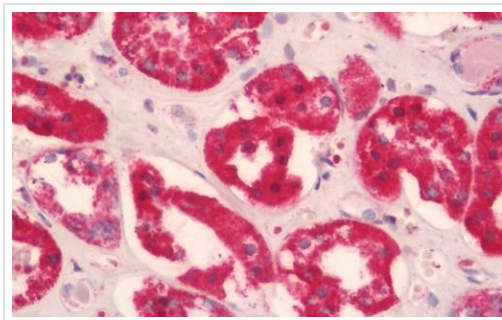
Formalin-fixed, paraffin-embedded human liver tissue stained for WFDC1/PS20 using ab230326 at 1/100 dilution in immunohistochemical analysis.

Immunohistochemistry (Formalin/PFA-fixed paraffin-embedded sections) - Anti-WFDC1/PS20 antibody (ab230326)



Flow Cytometry - Anti-WFDC1/PS20 antibody
(ab230326)

Flow cytometric analysis of HeLa (human epithelial cell line from cervix adenocarcinoma) cells labeling WFDC1/PS20 with ab230326 at 1/10 dilution (right histogram) compared to a negative control cell (left histogram). FITC-conjugated goat-anti-rabbit secondary antibodies were used for the analysis.



Immunohistochemistry (Formalin/PFA-fixed paraffin-embedded sections) - Anti-WFDC1/PS20 antibody
(ab230326)

Formalin-fixed, paraffin-embedded human kidney tissue stained for WFDC1/PS20 using ab230326 at 1/100 dilution in immunohistochemical analysis.

Please note: All products are "FOR RESEARCH USE ONLY. NOT FOR USE IN DIAGNOSTIC PROCEDURES"

Our Abpromise to you: Quality guaranteed and expert technical support

- Replacement or refund for products not performing as stated on the datasheet
- Valid for 12 months from date of delivery
- Response to your inquiry within 24 hours
- We provide support in Chinese, English, French, German, Japanese and Spanish
- Extensive multi-media technical resources to help you
- We investigate all quality concerns to ensure our products perform to the highest standards

If the product does not perform as described on this datasheet, we will offer a refund or replacement. For full details of the Abpromise, please visit <https://www.abcam.com/abpromise> or contact our technical team.

Terms and conditions

- Guarantee only valid for products bought direct from Abcam or one of our authorized distributors