




Product datasheet

Anti-WFS1 antibody ab176909

1 Image

Overview

<b>Product name</b>	Anti-WFS1 antibody
<b>Description</b>	Rabbit polyclonal to WFS1
<b>Host species</b>	Rabbit
<b>Tested applications</b>	<b>Suitable for:</b> WB
<b>Species reactivity</b>	<b>Reacts with:</b> Human <b>Predicted to work with:</b> Mouse 
<b>Immunogen</b>	Recombinant fragment corresponding to Human WFS1 aa 76-282. BC030130. Sequence: GTGPTKGDMEIPFEEVLERAKAGDPKAQTEVGKHYLQ LAGDTDEELNSCT AVDWLVLAAKQGRREAVKLLRRCLADRRGITSENERE VRQLSSETDLERA VRKAALVMYWKLNPKKKKQVAVAELENVGVQVNEHD GGAQPGVPKSLQK QRRMLERLVSSESKNYIALDDFVEITKKYAKGVIPSSLF LQDDEDDDELA GKSPEDL  Database link: <a href="#">O76024</a>   <a href="#">Run BLAST with</a>  <a href="#">Run BLAST with</a>
<b>Positive control</b>	Human fetal heart and Human fetal muscle lysates.

Properties

<b>Form</b>	Lyophilised:Reconstitute in 200ul sterile H2O.
<b>Storage instructions</b>	Shipped at 4°C. Store at +4°C short term (1-2 weeks). Upon delivery aliquot. Store at -20°C long term. Avoid freeze / thaw cycle.
<b>Storage buffer</b>	pH: 7.2 Preservative: 0.02% Sodium azide Constituents: 98% PBS, 1% BSA
<b>Purity</b>	Immunogen affinity purified
<b>Clonality</b>	Polyclonal

Isotype

IgG

## Applications

Our [Abpromise guarantee](#) covers the use of **ab176909** in the following tested applications.

The application notes include recommended starting dilutions; optimal dilutions/concentrations should be determined by the end user.

Application	Abreviews	Notes
WB		1/200 - 1/1000. Detects a band of approximately 100 kDa (predicted molecular weight: 100 kDa).

## Target

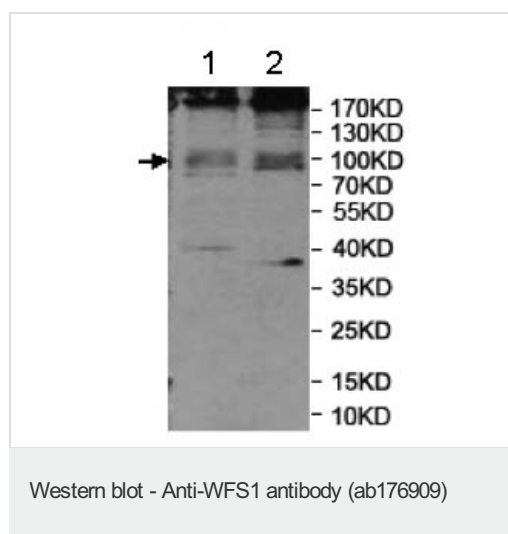
### Relevance

WFS1 is a novel component of Wolfram syndrome, a rare form of juvenile diabetes. WFS1 plays an important role in maintaining homeostasis of the endoplasmic reticulum (ER) in the pancreas. It is normally up-regulated during insulin secretion, whereas inactivation of the protein can cause ER stress. Chronic ER stress is a major involvement in Wolfram syndrome.

### Cellular localization

Endoplasmic reticulum; endoplasmic reticulum membrane; multipass membrane protein

## Images



**All lanes :** Anti-WFS1 antibody (ab176909) at 1/500 dilution

**Lane 1 :** Human fetal heart lysate

**Lane 2 :** Human fetal muscle lysate

**Predicted band size:** 100 kDa

**Please note:** All products are "FOR RESEARCH USE ONLY. NOT FOR USE IN DIAGNOSTIC PROCEDURES"

## Our Abpromise to you: Quality guaranteed and expert technical support

- Replacement or refund for products not performing as stated on the datasheet
- Valid for 12 months from date of delivery
- Response to your inquiry within 24 hours
- We provide support in Chinese, English, French, German, Japanese and Spanish

- Extensive multi-media technical resources to help you
- We investigate all quality concerns to ensure our products perform to the highest standards

If the product does not perform as described on this datasheet, we will offer a refund or replacement. For full details of the Abpromise, please visit <https://www.abcam.com/abpromise> or contact our technical team.

### **Terms and conditions**

---

- Guarantee only valid for products bought direct from Abcam or one of our authorized distributors