



Product datasheet

Anti-WHSC1/NSD2 antibody - N-terminal ab137429

3 References 2 Images

Overview

<b>Product name</b>	Anti-WHSC1/NSD2 antibody - N-terminal
<b>Description</b>	Rabbit polyclonal to WHSC1/NSD2 - N-terminal
<b>Host species</b>	Rabbit
<b>Tested applications</b>	<b>Suitable for:</b> WB, IHC-P
<b>Species reactivity</b>	<b>Reacts with:</b> Human
<b>Immunogen</b>	Synthetic peptide corresponding to Human WHSC1/NSD2 aa 1-100 (N terminal). Synthetic peptide, corresponding to a region within N terminal amino acids 1-44 of Human WHSC1/NSD2. Database link: <a href="#">O96028</a>
	 <a href="#">Run BLAST with</a>  <a href="#">Run BLAST with</a>
<b>Positive control</b>	MOLT4 and Raji cell lysates; A549 xenograft tissue.
<b>General notes</b>	<p>The Life Science industry has been in the grips of a reproducibility crisis for a number of years. Abcam is leading the way in addressing this with our range of recombinant monoclonal antibodies and knockout edited cell lines for gold-standard validation. Please check that this product meets your needs before purchasing.</p> <p>If you have any questions, special requirements or concerns, please send us an inquiry and/or contact our Support team ahead of purchase. Recommended alternatives for this product can be found below, along with publications, customer reviews and Q&amp;As</p>

Properties

<b>Form</b>	Liquid
<b>Storage instructions</b>	Shipped at 4°C. Upon delivery aliquot. Store at -20°C or -80°C. Avoid freeze / thaw cycle.
<b>Storage buffer</b>	pH: 7.00 Preservative: 0.01% Thimerosal (merthiolate) Constituents: 1.21% Tris, 0.75% Glycine, 10% Glycerol (glycerin, glycerine)
<b>Purity</b>	Immunogen affinity purified
<b>Clonality</b>	Polyclonal
<b>Isotype</b>	IgG

Applications

## The Abpromise guarantee

Our [Abpromise guarantee](#) covers the use of ab137429 in the following tested applications.

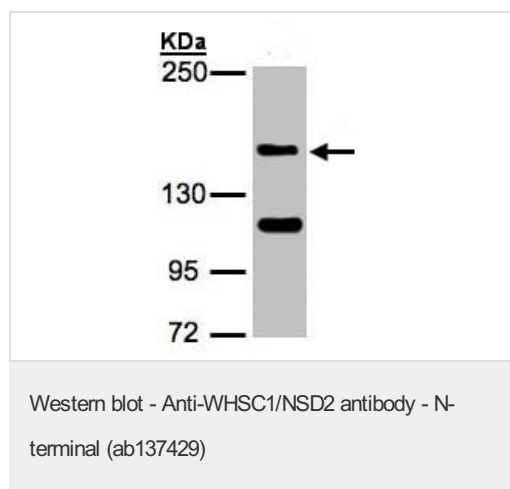
The application notes include recommended starting dilutions; optimal dilutions/concentrations should be determined by the end user.

Application	Abreviews	Notes
WB		1/500 - 1/300. Predicted molecular weight: 152 kDa.
IHC-P		1/100 - 1/1000. Suggested antigen retrieval using heat mediated 10mM Citrate buffer (pH6.0) or Tris-EDTA buffer (pH8.0).

## Target

<b>Function</b>	Probable histone methyltransferase (By similarity). May act as a transcription regulator that binds DNA and suppresses IL5 transcription.
<b>Tissue specificity</b>	Widely expressed.
<b>Involvement in disease</b>	Note=A chromosomal aberration involving WHSC1 is a cause of multiple myeloma tumors. Translocation t(4;14)(p16.3;q32.3) with IgH. Note=WHSC1 is located in the Wolf-Hirschhorn syndrome (WHS) critical region. WHS results from by sub-telomeric deletions in the short arm of chromosome 4. WHSC1 is deleted in every case, however deletion of linked genes contributes to both the severity of the core characteristics and the presence of the additional syndromic problems.
<b>Sequence similarities</b>	Belongs to the histone-lysine methyltransferase family. SET2 subfamily. Contains 1 AWS domain. Contains 1 HMG box DNA-binding domain. Contains 4 PHD-type zinc fingers. Contains 1 post-SET domain. Contains 2 PWWP domains. Contains 1 SET domain.
<b>Post-translational modifications</b>	Phosphorylated upon DNA damage, probably by ATM or ATR.
<b>Cellular localization</b>	Cytoplasm and Nucleus. Chromosome.

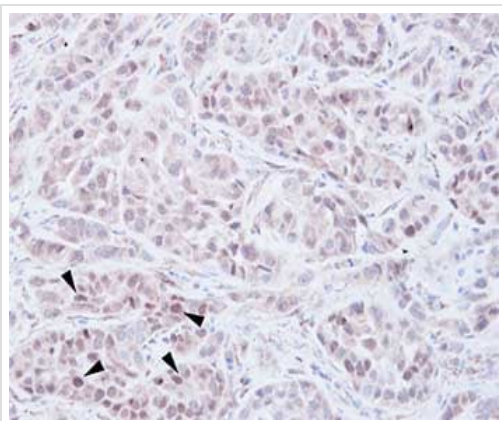
## Images



Anti-WHSC1/NSD2 antibody - N-terminal (ab137429) at 1/1000 dilution + Raji whole cell lysate at 30 µg

**Predicted band size:** 152 kDa

5% SDS PAGE



Immunohistochemical analysis of paraffin-embedded A549 xenograft tissue labelling WHSC1/NSD2 with ab137429 at 1/100 dilution.

Immunohistochemistry (Formalin/PFA-fixed paraffin-embedded sections) - Anti-WHSC1/NSD2 antibody - N-terminal (ab137429)

**Please note:** All products are "FOR RESEARCH USE ONLY. NOT FOR USE IN DIAGNOSTIC PROCEDURES"

### Our Abpromise to you: Quality guaranteed and expert technical support

---

- Replacement or refund for products not performing as stated on the datasheet
- Valid for 12 months from date of delivery
- Response to your inquiry within 24 hours
- We provide support in Chinese, English, French, German, Japanese and Spanish
- Extensive multi-media technical resources to help you
- We investigate all quality concerns to ensure our products perform to the highest standards

If the product does not perform as described on this datasheet, we will offer a refund or replacement. For full details of the Abpromise, please visit <https://www.abcam.com/abpromise> or contact our technical team.

### Terms and conditions

---

- Guarantee only valid for products bought direct from Abcam or one of our authorized distributors