

Product datasheet

Anti-WldS antibody ab94345

1 References 1 Image

Overview

Product name	Anti-WldS antibody
Description	Rabbit polyclonal to WldS
Host species	Rabbit
Tested applications	Suitable for: WB
Species reactivity	Reacts with: Mouse
Immunogen	Synthetic peptide: CDNIAVRGLHVGQHHQLLP (Mouse) conjugated to KLH

 [Run BLAST with](#)

 [Run BLAST with](#)

General notes

The Life Science industry has been in the grips of a reproducibility crisis for a number of years. Abcam is leading the way in addressing this with our range of recombinant monoclonal antibodies and knockout edited cell lines for gold-standard validation. Please check that this product meets your needs before purchasing.

If you have any questions, special requirements or concerns, please send us an inquiry and/or contact our Support team ahead of purchase. Recommended alternatives for this product can be found below, along with publications, customer reviews and Q&As

Properties

Form	Liquid
Storage instructions	Shipped at 4°C. Upon delivery aliquot and store at -20°C. Avoid repeated freeze / thaw cycles.
Storage buffer	Constituent: Whole serum
Purity	Whole antiserum
Clonality	Polyclonal
Isotype	IgG

Applications

The Abpromise guarantee Our [Abpromise guarantee](#) covers the use of ab94345 in the following tested applications. The application notes include recommended starting dilutions; optimal dilutions/concentrations should be determined by the end user.

Application	Abreviews	Notes
WB		

Application notes

ICC/IF: 1/2000 - 1/5000. Specificity is shown by a clear signal in WldS cells which is absent in wild-type cells (as wild-types lack WldS).
 IHC-P: 1/2000 - 1/5000. Specificity is shown by a clear signal in WldS cells which is absent in wild-type cells (as wild-types lack WldS).
 IHC-Fr: 1/2000 - 1/5000. Specificity is shown by a clear signal in WldS cells which is absent in wild-type cells (as wild-types lack WldS).
 IP: 1/20. See Laser, Conforti et al., 2006.
 WB: 1/2000 - 1/5000. A single band is seen at these dilutions. Predicted molecular weight: 43 kDa.

Not yet tested in other applications.
 Optimal dilutions/concentrations should be determined by the end user.

Target

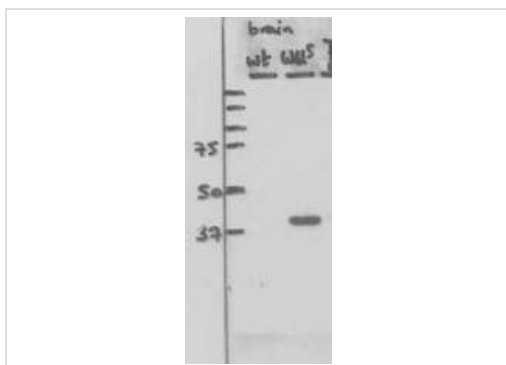
Relevance

The slow Wallerian Degeneration (WldS) gene encodes a novel Ube4b-Nmnat1 chimeric protein (WldS protein). WldS protein confers a neuroprotective effect on axonal and synaptic compartments of neurons from a wide variety of degeneration-inducing stimuli. The chimeric WldS gene occurred as the result of a spontaneous mutation in C57BL/6 mice, resulting in a tandem triplication of a region already present on the distal region of chromosome 4. The triplicated region contains sequences coding for Nmnat1, Rbp7 and Ube4b. The boundaries within the triplicated region result in 2 copies of a fusion gene comprising the N70 terminal amino acids of Ube4b and the entire coding region of Nmnat1 (C Terminal 285 amino acids), linked by 18 amino acids from the 5' untranslated region of Nmnat1 which are not normally expressed.

Cellular localization

Nuclear

Images



All lanes : Anti-WldS antibody (ab94345) at 1/2000 dilution

Lane 1 : Wild-type mouse brain homogenate

Lane 2 : WldS mouse brain homogenate

Predicted band size: 43 kDa

Observed band size: 43 kDa

Western blot - Anti-WldS antibody (ab94345)

Please note: All products are "FOR RESEARCH USE ONLY. NOT FOR USE IN DIAGNOSTIC PROCEDURES"

Our Abpromise to you: Quality guaranteed and expert technical support

- Replacement or refund for products not performing as stated on the datasheet
- Valid for 12 months from date of delivery
- Response to your inquiry within 24 hours

- We provide support in Chinese, English, French, German, Japanese and Spanish
- Extensive multi-media technical resources to help you
- We investigate all quality concerns to ensure our products perform to the highest standards

If the product does not perform as described on this datasheet, we will offer a refund or replacement. For full details of the Abpromise, please visit <https://www.abcam.com/abpromise> or contact our technical team.

Terms and conditions

- Guarantee only valid for products bought direct from Abcam or one of our authorized distributors