

## Product datasheet

# Anti-Wnt7b antibody ab94915

[7 References](#) [4 Images](#)

### Overview

---

<b>Product name</b>	Anti-Wnt7b antibody
<b>Description</b>	Rabbit polyclonal to Wnt7b
<b>Host species</b>	Rabbit
<b>Tested applications</b>	<b>Suitable for:</b> IHC-P, WB
<b>Species reactivity</b>	<b>Reacts with:</b> Mouse, Human

**Predicted to work with:** Rat, Horse, Guinea pig, Cow, Dog, Pig 

### Immunogen

Synthetic peptide corresponding to a region within internal sequence amino acids 216-265 (TTLPKFREVG HLLKEKYNA VQVEVVRASR LRQPTFLRIK QLRSYQKPME) of Human Wnt7b (NP\_478679).

 [Run BLAST with ExPASy](#)  [Run BLAST with NCBI](#)

### General notes

Reproducibility is key to advancing scientific discovery and accelerating scientists' next breakthrough.

Abcam is leading the way with our range of recombinant antibodies, knockout-validated antibodies and knockout cell lines, all of which support improved reproducibility.

We are also planning to innovate the way in which we present recommended applications and species on our product datasheets, so that only applications & species that have been tested in our own labs, our suppliers or by selected trusted collaborators are covered by our Abpromise™ guarantee.

In preparation for this, we have started to update the applications & species that this product is Abpromise guaranteed for.

We are also updating the applications & species that this product has been “predicted to work with,” however this information is not covered by our Abpromise guarantee.

Applications & species from publications and Abreviews that have not been tested in our own labs or in those of our suppliers are not covered by the Abpromise guarantee.

Please check that this product meets your needs before purchasing. If you have any questions, special requirements or concerns, please send us an inquiry and/or contact our Support team ahead of purchase. Recommended alternatives for this product can be found below, as well as customer reviews and Q&As.

### Properties

---

<b>Form</b>	Liquid
<b>Storage instructions</b>	Shipped at 4°C. Store at +4°C short term (1-2 weeks). Upon delivery aliquot. Store at -20°C long term. Avoid freeze / thaw cycle.
<b>Storage buffer</b>	pH: 7.2 Preservative: 0.09% Sodium azide Constituents: 2% Sucrose, PBS
<b>Purity</b>	Immunogen affinity purified
<b>Clonality</b>	Polyclonal
<b>Isotype</b>	IgG

## Applications

Our [Abpromise guarantee](#) covers the use of **ab94915** in the following tested applications.

The application notes include recommended starting dilutions; optimal dilutions/concentrations should be determined by the end user.

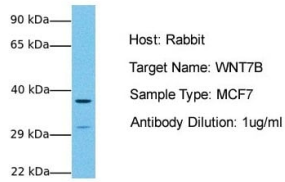
Application	Abreviews	Notes
IHC-P		Use a concentration of 4 - 8 µg/ml.
WB		Use a concentration of 1 µg/ml. Predicted molecular weight: 39 kDa. Good results were obtained when blocked with 5% non-fat dry milk in 0.05% PBS-T.

## Target

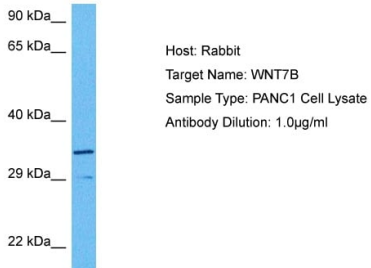
<b>Function</b>	Ligand for members of the frizzled family of seven transmembrane receptors. Probable developmental protein. May be a signaling molecule which affects the development of discrete regions of tissues. Is likely to signal over only few cell diameters.
<b>Tissue specificity</b>	Moderately expressed in fetal brain, weakly expressed in fetal lung and kidney, and faintly expressed in adult brain, lung and prostate.
<b>Sequence similarities</b>	Belongs to the Wnt family.
<b>Cellular localization</b>	Secreted > extracellular space > extracellular matrix.
<b>Form</b>	Wnt7b is a secreted glycosylated protein that belongs to the Wnt family. Wnt proteins can be lipid modified and are ligands for members of the frizzled family of receptors, which mediate cell-cell communication during development. Wnt7b is thought to modulate several important signaling pathways in the lung which results in the coordinated proliferation of adjacent epithelial and mesenchymal cells to stimulate organ growth.

## Images

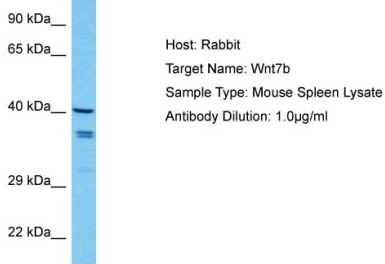
## WNT7B



Western blot - Anti-Wnt7b antibody (ab94915)



Western blot - Anti-Wnt7b antibody (ab94915)



Western blot - Anti-Wnt7b antibody (ab94915)

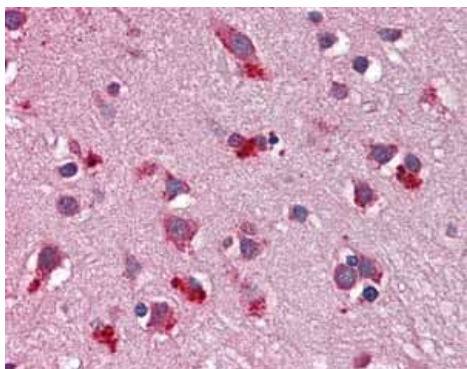
Anti-Wnt7b antibody (ab94915) at 1 µg/ml (in 5% skim milk / PBS buffer) + Human fetal kidney lysate at 10 µg

### Secondary

HRP conjugated anti-Rabbit IgG at 1/50000 dilution

**Predicted band size:** 39 kDa

Gel concentration: 12%



Immunohistochemistry (Formalin/PFA-fixed paraffin-embedded sections) analysis of human brain, cortex tissue labelling Wnt7b with ab94915 at 4-8 $\mu$ g/ml.

Immunohistochemistry (Formalin/PFA-fixed paraffin-embedded sections) - Anti-Wnt7b antibody (ab94915)

**Please note:** All products are "FOR RESEARCH USE ONLY. NOT FOR USE IN DIAGNOSTIC PROCEDURES"

### Our Abpromise to you: Quality guaranteed and expert technical support

---

- Replacement or refund for products not performing as stated on the datasheet
- Valid for 12 months from date of delivery
- Response to your inquiry within 24 hours
- We provide support in Chinese, English, French, German, Japanese and Spanish
- Extensive multi-media technical resources to help you
- We investigate all quality concerns to ensure our products perform to the highest standards

If the product does not perform as described on this datasheet, we will offer a refund or replacement. For full details of the Abpromise, please visit <https://www.abcam.com/abpromise> or contact our technical team.

### Terms and conditions

---

- Guarantee only valid for products bought direct from Abcam or one of our authorized distributors