

Product datasheet

Anti-WRCH1 antibody ab80315

★★★★★ 1 Abreviews 2 References 1 Image

Overview

Product name	Anti-WRCH1 antibody
Description	Rabbit polyclonal to WRCH1
Host species	Rabbit
Tested applications	Suitable for: WB
Species reactivity	<p>Reacts with: Human</p> <p>Predicted to work with: Mouse, Rat, Rabbit, Horse, Guinea pig, Cow, Dog, Pig </p>
Immunogen	<p>Synthetic peptide corresponding to Human WRCH1 aa 211-258 (C terminal). Sequence:</p> <p>LKEVFDAAVAGIQYSDTQQQPKKSKSRTPDKMKNLSKS WWKKYCCFV</p> <p style="text-align: right;"> Run BLAST with Run BLAST with </p>
Positive control	WB: Fetal muscle lysate.
General notes	<p>Reproducibility is key to advancing scientific discovery and accelerating scientists' next breakthrough.</p> <p>Abcam is leading the way with our range of recombinant antibodies, knockout-validated antibodies and knockout cell lines, all of which support improved reproducibility.</p> <p>We are also planning to innovate the way in which we present recommended applications and species on our product datasheets, so that only applications & species that have been tested in our own labs, our suppliers or by selected trusted collaborators are covered by our Abpromise™ guarantee.</p> <p>In preparation for this, we have started to update the applications & species that this product is Abpromise guaranteed for.</p> <p>We are also updating the applications & species that this product has been “predicted to work with,” however this information is not covered by our Abpromise guarantee.</p> <p>Applications & species from publications and Abreviews that have not been tested in our own labs or in those of our suppliers are not covered by the Abpromise guarantee.</p> <p>Please check that this product meets your needs before purchasing. If you have any questions, special requirements or concerns, please send us an inquiry and/or contact our Support team ahead of purchase. Recommended alternatives for this product can be found below, as well as customer reviews and Q&As.</p>

Properties

Form	Liquid
Storage instructions	Shipped at 4°C. Store at +4°C short term (1-2 weeks). Upon delivery aliquot. Store at -20°C long term. Avoid freeze / thaw cycle.
Storage buffer	pH: 7.2 Preservative: 0.09% Sodium azide Constituents: 2% Sucrose, PBS
Purity	Immunogen affinity purified
Clonality	Polyclonal
Isotype	IgG

Applications

Our [Abpromise guarantee](#) covers the use of **ab80315** in the following tested applications.

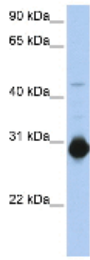
The application notes include recommended starting dilutions; optimal dilutions/concentrations should be determined by the end user.

Application	Abreviews	Notes
WB	★★★★☆	Use a concentration of 1 µg/ml. Detects a band of approximately 28 kDa (predicted molecular weight: 28 kDa). Good results were obtained when blocked with 5% non-fat dry milk in 0.05% PBS-T.

Target

Function	Acts upstream of PAK1 to regulate the actin cytoskeleton, adhesion turnover and increase cell migration. Stimulates quiescent cells to reenter the cell cycle. Has no detectable GTPase activity but its high intrinsic guanine nucleotide exchange activity suggests it is constitutively GTP-bound.
Tissue specificity	Ubiquitously expressed in all tissues examined. Expressed at high levels in the stomach, small intestine, brain, skeletal muscle and placenta.
Sequence similarities	Belongs to the small GTPase superfamily. Rho family.
Cellular localization	Cell membrane. Golgi apparatus membrane. Cell junction > focal adhesion. Cell projection > podosome. Localizes to podosomes in SRC-transformed cells.

Images



Western blot - Anti-WRCH1 antibody (ab80315)

Anti-WRCH1 antibody (ab80315) at 1 µg/ml + Fetal muscle lysate at 10 µg

Secondary

HRP conjugated anti-Rabbit IgG at 1/50000 dilution

Predicted band size: 28 kDa

Observed band size: 28 kDa

Additional bands at: 45 kDa. We are unsure as to the identity of these extra bands.

Gel concentration: 12%

Please note: All products are "FOR RESEARCH USE ONLY. NOT FOR USE IN DIAGNOSTIC PROCEDURES"

Our Abpromise to you: Quality guaranteed and expert technical support

- Replacement or refund for products not performing as stated on the datasheet
- Valid for 12 months from date of delivery
- Response to your inquiry within 24 hours

- We provide support in Chinese, English, French, German, Japanese and Spanish
- Extensive multi-media technical resources to help you
- We investigate all quality concerns to ensure our products perform to the highest standards

If the product does not perform as described on this datasheet, we will offer a refund or replacement. For full details of the Abpromise, please visit <https://www.abcam.com/abpromise> or contact our technical team.

Terms and conditions

- Guarantee only valid for products bought direct from Abcam or one of our authorized distributors