

## Product datasheet

# Anti-XPF antibody - C-terminal ab227729

1 Image

### Overview

---

<b>Product name</b>	Anti-XPF antibody - C-terminal
<b>Description</b>	Rabbit polyclonal to XPF - C-terminal
<b>Host species</b>	Rabbit
<b>Tested applications</b>	<b>Suitable for:</b> WB
<b>Species reactivity</b>	<b>Reacts with:</b> Human
<b>Immunogen</b>	Recombinant fragment within Human XPF (C terminal). The exact sequence is proprietary. Database link: <a href="#">Q92889</a>
<b>Positive control</b>	WB: HEK-293T, A431, HeLa and HepG2 whole cell lysate.
<b>General notes</b>	<p>Reproducibility is key to advancing scientific discovery and accelerating scientists' next breakthrough.</p> <p>Abcam is leading the way with our range of recombinant antibodies, knockout-validated antibodies and knockout cell lines, all of which support improved reproducibility.</p> <p>We are also planning to innovate the way in which we present recommended applications and species on our product datasheets, so that only applications &amp; species that have been tested in our own labs, our suppliers or by selected trusted collaborators are covered by our Abpromise™ guarantee.</p> <p>In preparation for this, we have started to update the applications &amp; species that this product is Abpromise guaranteed for.</p> <p>We are also updating the applications &amp; species that this product has been “predicted to work with,” however this information is not covered by our Abpromise guarantee.</p> <p>Applications &amp; species from publications and Abreviews that have not been tested in our own labs or in those of our suppliers are not covered by the Abpromise guarantee.</p> <p>Please check that this product meets your needs before purchasing. If you have any questions, special requirements or concerns, please send us an inquiry and/or contact our Support team ahead of purchase. Recommended alternatives for this product can be found below, as well as customer reviews and Q&amp;As.</p>

### Properties

---

<b>Form</b>	Liquid
<b>Storage instructions</b>	Shipped at 4°C. Store at +4°C short term (1-2 weeks). Upon delivery aliquot. Store at -20°C long

term. Avoid freeze / thaw cycle.

**Storage buffer**

pH: 7.00  
Preservative: 0.025% Proclin 300  
Constituents: 79% PBS, 20% Glycerol (glycerin, glycerine)

**Purity**

Immunogen affinity purified

**Clonality**

Polyclonal

**Isotype**

IgG

**Applications**

---

Our [Abpromise guarantee](#) covers the use of **ab227729** in the following tested applications.

The application notes include recommended starting dilutions; optimal dilutions/concentrations should be determined by the end user.

Application	Abreviews	Notes
WB		1/500 - 1/3000. Predicted molecular weight: 104 kDa.

---

**Target**

---

**Function**

Structure-specific DNA repair endonuclease responsible for the 5-prime incision during DNA repair. Involved in homologous recombination that assists in removing interstrand cross-link.

**Involvement in disease**

Defects in ERCC4 are the cause of xeroderma pigmentosum complementation group F (XP-F) [MIM:278760]; also known as xeroderma pigmentosum VI (XP6). XP-F is an autosomal recessive disease characterized by hypersensitivity of the skin to sunlight followed by high incidence of skin cancer and frequent neurologic abnormalities.

Defects in ERCC4 are a cause of XFE progeroid syndrome (XFEPS) [MIM:610965]. This syndrome is illustrated by one patient who presented with dwarfism, cachexia and microcephaly.

**Sequence similarities**

Belongs to the XPF family.  
Contains 1 ERCC4 domain.

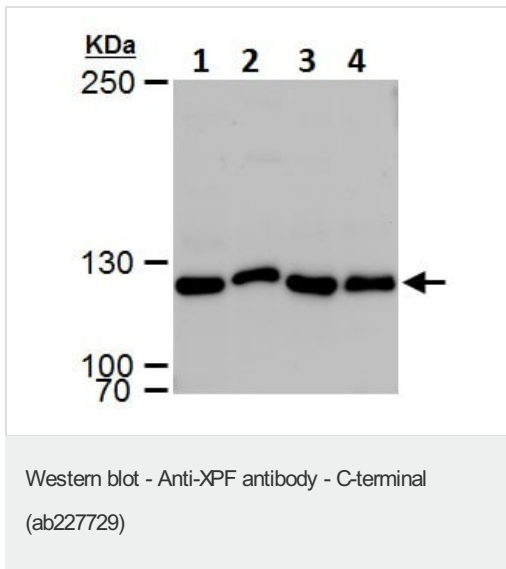
**Cellular localization**

Nucleus.

---

**Images**

---



**All lanes :** Anti-XPF antibody - C-terminal (ab227729) at 1/1000 dilution

**Lane 1 :** HEK-293T (human epithelial cell line from embryonic kidney transformed with large T antigen) whole cell lysate

**Lane 2 :** A431 (human epidermoid carcinoma cell line) whole cell lysate

**Lane 3 :** HeLa (human epithelial cell line from cervix adenocarcinoma) whole cell lysate

**Lane 4 :** HepG2 (human liver hepatocellular carcinoma cell line) whole cell lysate

Lysates/proteins at 30 µg per lane.

Developed using the ECL technique.

Performed under reducing conditions.

**Predicted band size:** 104 kDa

5% SDS-PAGE

**Please note:** All products are "FOR RESEARCH USE ONLY. NOT FOR USE IN DIAGNOSTIC PROCEDURES"

### Our Abpromise to you: Quality guaranteed and expert technical support

- Replacement or refund for products not performing as stated on the datasheet
- Valid for 12 months from date of delivery
- Response to your inquiry within 24 hours
- We provide support in Chinese, English, French, German, Japanese and Spanish
- Extensive multi-media technical resources to help you
- We investigate all quality concerns to ensure our products perform to the highest standards

If the product does not perform as described on this datasheet, we will offer a refund or replacement. For full details of the Abpromise, please visit <https://www.abcam.com/abpromise> or contact our technical team.

### Terms and conditions

- Guarantee only valid for products bought direct from Abcam or one of our authorized distributors