

Product datasheet

Anti-XPNPEP1 antibody [OT11E3] ab123929

1 References 5 Images

Overview

Product name	Anti-XPNPEP1 antibody [OT11E3]
Description	Mouse monoclonal [OT11E3] to XPNPEP1
Host species	Mouse
Tested applications	Suitable for: WB, IHC-P, ICC/IF
Species reactivity	Reacts with: Mouse, Rat, Dog, Human, African green monkey
Immunogen	Recombinant full length protein corresponding to Human XPNPEP1. Produced in HEK293T cells (NP_065116). Database link: Q9NQW7
Positive control	WB: HEK-293T cells transfected with pCMV6-ENTRY XPNPEP1 cDNA; HepG2, HeLa, SVT2, A549, COS-7, Jurkat, MDCK, PC12 and MCF7 whole cell lysate. IHC-P: Human thyroid and prostate tissues. ICC/IF: COS7 cells transiently transfected by pCMV6-ENTRY XPNPEP1.
General notes	<p>The Life Science industry has been in the grips of a reproducibility crisis for a number of years. Abcam is leading the way in addressing this with our range of recombinant monoclonal antibodies and knockout edited cell lines for gold-standard validation. Please check that this product meets your needs before purchasing.</p> <p>If you have any questions, special requirements or concerns, please send us an inquiry and/or contact our Support team ahead of purchase. Recommended alternatives for this product can be found below, along with publications, customer reviews and Q&As</p>

Properties

Form	Liquid
Storage instructions	Shipped at 4°C. Store at +4°C short term (1-2 weeks). Upon delivery aliquot. Store at -20°C long term. Avoid freeze / thaw cycle.
Storage buffer	pH: 7.30 Preservative: 0.02% Sodium azide Constituents: PBS, 50% Glycerol, 1% BSA
Purity	Protein G purified
Purification notes	ab123929 is purified from Mouse ascites fluid by affinity chromatography.
Clonality	Monoclonal
Clone number	OT11E3

Isotype

IgG1

Applications

The Abpromise guarantee

Our [Abpromise guarantee](#) covers the use of ab123929 in the following tested applications.

The application notes include recommended starting dilutions; optimal dilutions/concentrations should be determined by the end user.

Application	Abreviews	Notes
WB		1/2000. Predicted molecular weight: 70 kDa.
IHC-P		1/150. Perform heat mediated antigen retrieval with citrate buffer pH 6 before commencing with IHC staining protocol.
ICC/IF		1/100.

Target

Function

Contributes to the degradation of bradykinin. Catalyzes the removal of a penultimate prolyl residue from the N-termini of peptides, such as Arg-Pro-Pro.

Tissue specificity

Expressed in all tissues tested, including pancreas, heart, muscle, kidney, liver, lung and brain. Highest levels in pancreas.

Sequence similarities

Belongs to the peptidase M24B family.

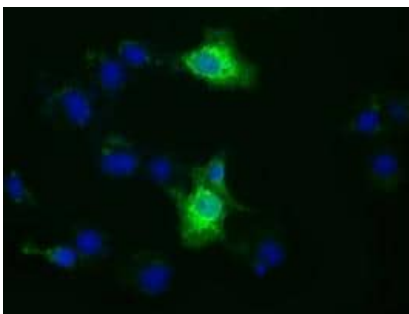
Cellular localization

Cytoplasm.

Form

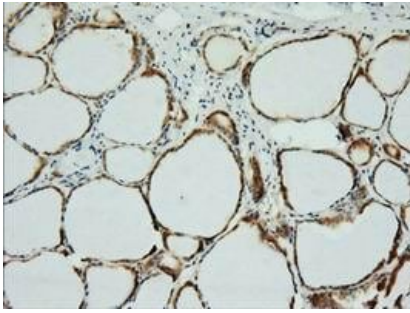
X-prolyl aminopeptidase is a proline-specific metalloaminopeptidase that specifically catalyzes the removal of any unsubstituted N-terminal amino acid that is adjacent to a penultimate proline residue. There are 2 isoforms produced by alternative splicing.

Images



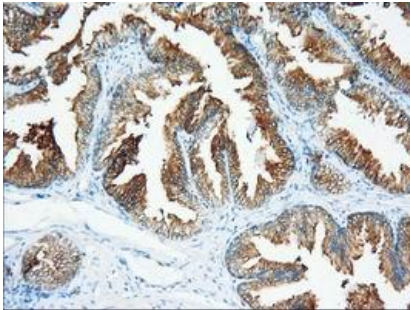
COS-7 (African green monkey kidney fibroblast-like cell line) cells transiently transfected by pCMV6-ENTRY XPNPEP1, stained for XPNPEP1 (Green) using ab123929 at 1/100 dilution in ICC/IF.

Immunocytochemistry/ Immunofluorescence - Anti-XPNPEP1 antibody [OT11E3] (ab123929)



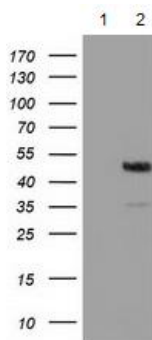
Immunohistochemistry (Formalin/PFA-fixed paraffin-embedded sections) - Anti-XPNPEP1 antibody [OT11E3] (ab123929)

Paraffin-embedded human thyroid tissue stained for XPNPEP1 using ab123929 at 1/150 dilution in immunohistochemical analysis.



Immunohistochemistry (Formalin/PFA-fixed paraffin-embedded sections) - Anti-XPNPEP1 antibody [OT11E3] (ab123929)

Paraffin-embedded human prostate tissue stained for XPNPEP1 using ab123929 at 1/150 dilution in immunohistochemical analysis.



Western blot - Anti-XPNPEP1 antibody [OT11E3] (ab123929)

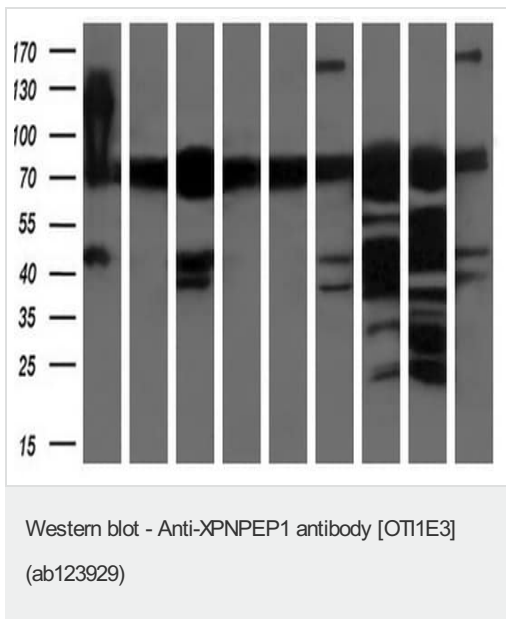
All lanes : Anti-XPNPEP1 antibody [OT11E3] (ab123929) at 1/2000 dilution

Lane 1 : HEK-293T (human epithelial cell line from embryonic kidney transformed with large T antigen) cells transfected with pCMV6-ENTRY control cDNA

Lane 2 : HEK-293T cells transfected with pCMV6-ENTRY XPNPEP1 cDNA

Lysates/proteins at 5 µg per lane.

Predicted band size: 70 kDa



All lanes : Anti-XPNPEP1 antibody [OT11E3] (ab123929) at 1/200 dilution

Lane 1 : HepG2 (human liver hepatocellular carcinoma cell line) whole cell lysate

Lane 2 : HeLa (human epithelial cell line from cervix adenocarcinoma) whole cell lysate

Lane 3 : SVT2

Lane 4 : A549 (human lung carcinoma cell line) whole cell lysate

Lane 5 : COS-7 (African green monkey kidney fibroblast-like cell line) whole cell lysate

Lane 6 : Jurkat (human T cell leukemia cell line from peripheral blood) whole cell lysate

Lane 7 : MDCK

Lane 8 : PC-12 (rat adrenal gland pheochromocytoma cell line) whole cell lysate

Lane 9 : MCF7 (human breast adenocarcinoma cell line) whole cell lysate

Lysates/proteins at 35 µg per lane.

Predicted band size: 70 kDa

Please note: All products are "FOR RESEARCH USE ONLY. NOT FOR USE IN DIAGNOSTIC PROCEDURES"

Our Abpromise to you: Quality guaranteed and expert technical support

- Replacement or refund for products not performing as stated on the datasheet
- Valid for 12 months from date of delivery
- Response to your inquiry within 24 hours
- We provide support in Chinese, English, French, German, Japanese and Spanish
- Extensive multi-media technical resources to help you
- We investigate all quality concerns to ensure our products perform to the highest standards

If the product does not perform as described on this datasheet, we will offer a refund or replacement. For full details of the Abpromise, please visit <https://www.abcam.com/abpromise> or contact our technical team.

Terms and conditions

- Guarantee only valid for products bought direct from Abcam or one of our authorized distributors