

Product datasheet

Anti-XRCC1 antibody ab235196

2 Images

Overview

Product name	Anti-XRCC1 antibody
Description	Chicken polyclonal to XRCC1
Host species	Chicken
Tested applications	Suitable for: WB, ICC/IF
Species reactivity	Reacts with: Human Predicted to work with: Mouse, Rat, Chinese hamster ▲
Immunogen	Synthetic peptide. This information is considered to be commercially sensitive.
Positive control	WB: U-2 OS and Molt4 whole cell lysate. ICC/IF: U-2 OS cells.
General notes	<p>Reproducibility is key to advancing scientific discovery and accelerating scientists' next breakthrough.</p> <p>Abcam is leading the way with our range of recombinant antibodies, knockout-validated antibodies and knockout cell lines, all of which support improved reproducibility.</p> <p>We are also planning to innovate the way in which we present recommended applications and species on our product datasheets, so that only applications & species that have been tested in our own labs, our suppliers or by selected trusted collaborators are covered by our Abpromise™ guarantee.</p> <p>In preparation for this, we have started to update the applications & species that this product is Abpromise guaranteed for.</p> <p>We are also updating the applications & species that this product has been “predicted to work with,” however this information is not covered by our Abpromise guarantee.</p> <p>Applications & species from publications and Abreviews that have not been tested in our own labs or in those of our suppliers are not covered by the Abpromise guarantee.</p> <p>Please check that this product meets your needs before purchasing. If you have any questions, special requirements or concerns, please send us an inquiry and/or contact our Support team ahead of purchase. Recommended alternatives for this product can be found below, as well as customer reviews and Q&As.</p>

Properties

Form	Liquid
-------------	--------

Storage instructions	Shipped at 4°C. Store at +4°C short term (1-2 weeks). Upon delivery aliquot. Store at -20°C long term. Avoid freeze / thaw cycle.
Storage buffer	Preservative: 0.01% Sodium azide Constituent: PBS
Purity	Affinity purified
Clonality	Polyclonal
Isotype	IgY

Applications

Our [Abpromise guarantee](#) covers the use of **ab235196** in the following tested applications.

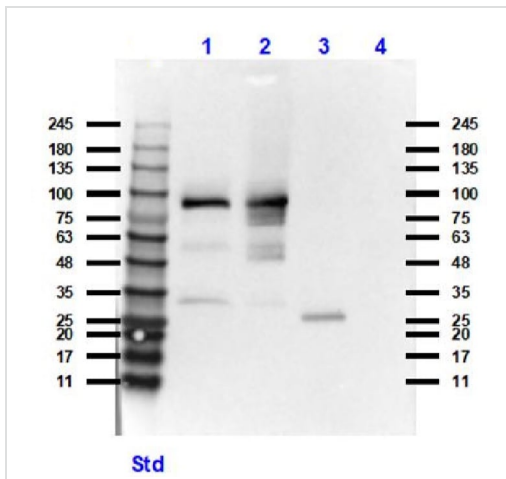
The application notes include recommended starting dilutions; optimal dilutions/concentrations should be determined by the end user.

Application	Abreviews	Notes
WB		Use at an assay dependent concentration. Predicted molecular weight: 69 kDa.
ICC/IF		Use at an assay dependent concentration.

Target

Function	Corrects defective DNA strand-break repair and sister chromatid exchange following treatment with ionizing radiation and alkylating agents.
Sequence similarities	Contains 2 BRCT domains.
Post-translational modifications	Phosphorylation of Ser-371 causes dimer dissociation. Phosphorylation by CK2 promotes interaction with APTX and APLF. Sumoylated.
Cellular localization	Nucleus. Accumulates at sites of DNA damage.

Images



Western blot - Anti-XRCC1 antibody (ab235196)

All lanes : Anti-XRCC1 antibody (ab235196) at 5 µg/ml

Lane 1 : U-2 OS whole cell lysate

Lane 2 : Molt4 whole cell lysate

Lane 3 : Human testis whole tissue lysate

Lane 4 : Mouse liver whole tissue lysate

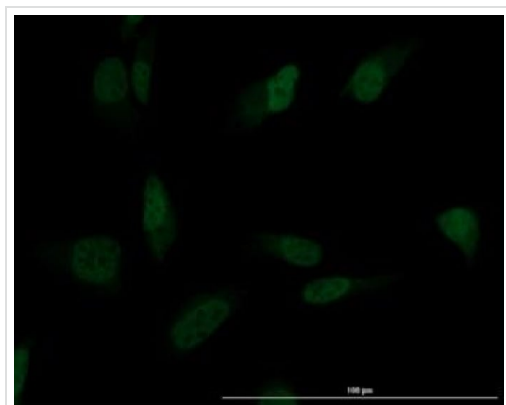
Lysates/proteins at 35 µg per lane.

Secondary

All lanes : Goat anti-Chicken IgG [H&L] at 1/40000 dilution

Predicted band size: 69 kDa

Exposure time: 20 seconds



Immunocytochemistry/ Immunofluorescence - Anti-XRCC1 antibody (ab235196)

100% methanol-fixed, 0.3% Triton X-100 permeabilized U-2 OS (human bone osteosarcoma epithelial cell line) cells labeling XRCC1 using ab235196 at 10 µg/ml, overnight at +4°C. Followed by a Donkey anti-Chicken IgG DyLight™ 488 conjugated preadsorbed secondary antibody at 5 µg/ml, for 1 hour at RT.

Please note: All products are "FOR RESEARCH USE ONLY. NOT FOR USE IN DIAGNOSTIC PROCEDURES"

Our Abpromise to you: Quality guaranteed and expert technical support

- Replacement or refund for products not performing as stated on the datasheet
- Valid for 12 months from date of delivery
- Response to your inquiry within 24 hours
- We provide support in Chinese, English, French, German, Japanese and Spanish
- Extensive multi-media technical resources to help you
- We investigate all quality concerns to ensure our products perform to the highest standards

If the product does not perform as described on this datasheet, we will offer a refund or replacement. For full details of the Abpromise, please visit <https://www.abcam.com/abpromise> or contact our technical team.

Terms and conditions

- Guarantee only valid for products bought direct from Abcam or one of our authorized distributors