

Product datasheet

Anti-YY1 antibody ab227269

[2 Images](#)

Overview

Product name	Anti-YY1 antibody
Description	Rabbit polyclonal to YY1
Host species	Rabbit
Tested applications	Suitable for: WB, IP
Species reactivity	Reacts with: Human Predicted to work with: Mouse, Rat, Cow
Immunogen	Recombinant fragment within Human YY1 (internal sequence). The exact sequence is proprietary. Database link: P25490
Positive control	WB: HEK-293T whole cell lysate. IP: HeLa whole cell lysate.

Properties

Form	Liquid
Storage instructions	Shipped at 4°C. Store at +4°C short term (1-2 weeks). Upon delivery aliquot. Store at -20°C long term. Avoid freeze / thaw cycle.
Storage buffer	pH: 7.00 Preservative: 0.01% Thimerosal (merthiolate) Constituents: PBS, 1% BSA, 20% Glycerol
Purity	Immunogen affinity purified
Clonality	Polyclonal
Isotype	IgG

Applications

Our [Abpromise guarantee](#) covers the use of **ab227269** in the following tested applications.

The application notes include recommended starting dilutions; optimal dilutions/concentrations should be determined by the end user.

Application	Abreviews	Notes
WB		1/500 - 1/3000. Predicted molecular weight: 45 kDa.

Application	Abreviews	Notes
IP		1/100 - 1/500.

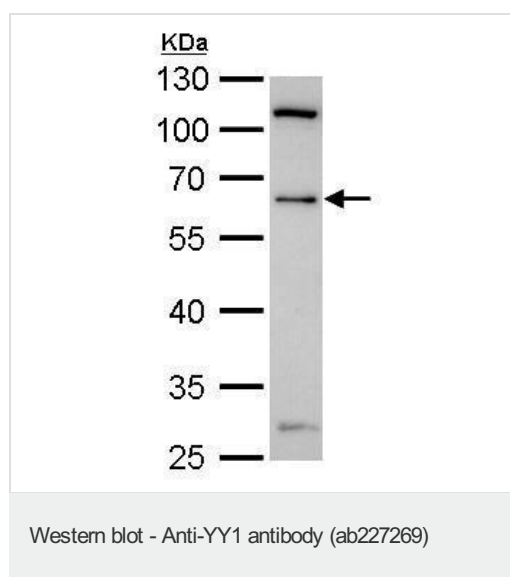
Target

Function Multifunctional transcription factor that exhibits positive and negative control on a large number of cellular and viral genes by binding to sites overlapping the transcription start site. May play an important role in development and differentiation. The function of YY1 as an activator or a repressor is specified by the presence of other proteins. For example it acts as a repressor in absence of adenovirus E1A protein but as an activator in its presence.

Sequence similarities Belongs to the YY transcription factor family.
Contains 4 C2H2-type zinc fingers.

Cellular localization Nucleus matrix. Associated with the nuclear matrix.

Images

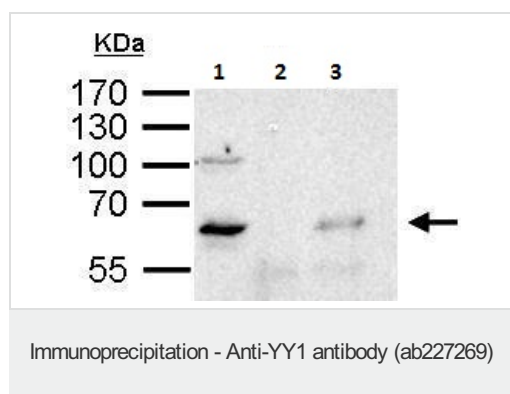


Anti-YY1 antibody (ab227269) at 1/1000 dilution + HEK-293T (human epithelial cell line from embryonic kidney transformed with large T antigen) whole cell lysate at 30 µg

Developed using the ECL technique.

Predicted band size: 45 kDa

10% SDS-PAGE



YY1 was immunoprecipitated from 1 mg HeLa (human epithelial cell line from cervix adenocarcinoma) whole cell lysate with 2 µg ab227269. Western blot was performed from the immunoprecipitate using ab227269 at 1/1000 dilution.

Lane 1: HeLa whole cell lysate 50 µg (Input).

Lane 2: Control IgG IP in HeLa whole cell lysate.

Lane 3: ab227269 IP in HeLa whole cell lysate.

10% SDS-PAGE

Please note: All products are "FOR RESEARCH USE ONLY. NOT FOR USE IN DIAGNOSTIC PROCEDURES"

Our Abpromise to you: Quality guaranteed and expert technical support

- Replacement or refund for products not performing as stated on the datasheet
- Valid for 12 months from date of delivery
- Response to your inquiry within 24 hours

- We provide support in Chinese, English, French, German, Japanese and Spanish
- Extensive multi-media technical resources to help you
- We investigate all quality concerns to ensure our products perform to the highest standards

If the product does not perform as described on this datasheet, we will offer a refund or replacement. For full details of the Abpromise, please visit <https://www.abcam.com/abpromise> or contact our technical team.

Terms and conditions

- Guarantee only valid for products bought direct from Abcam or one of our authorized distributors