


Product datasheet

Anti-ZBT10 antibody ab80879

1 Image

Overview

Product name	Anti-ZBT10 antibody
Description	Rabbit polyclonal to ZBT10
Host species	Rabbit
Tested applications	Suitable for: WB
Species reactivity	Reacts with: Human Predicted to work with: Rat 
Immunogen	Synthetic peptide corresponding to Human ZBT10 aa 300-400 conjugated to keyhole limpet haemocyanin. (Peptide available as ab90846)
Positive control	This antibody gave a positive signal in human liver tissue lysate and the following whole cell lysates: HeLa; HEK293; HepG2; HUVEC; SHSY-5Y.
General notes	<p>The Life Science industry has been in the grips of a reproducibility crisis for a number of years. Abcam is leading the way in addressing this with our range of recombinant monoclonal antibodies and knockout edited cell lines for gold-standard validation. Please check that this product meets your needs before purchasing.</p> <p>If you have any questions, special requirements or concerns, please send us an inquiry and/or contact our Support team ahead of purchase. Recommended alternatives for this product can be found below, along with publications, customer reviews and Q&As</p>

Properties

Form	Liquid
Storage instructions	Shipped at 4°C. Store at +4°C short term (1-2 weeks). Upon delivery aliquot. Store at -20°C or -80°C. Avoid freeze / thaw cycle.
Storage buffer	pH: 7.40 Preservative: 0.02% Sodium azide Constituent: PBS

Batches of this product that have a concentration < 1mg/ml may have BSA added as a stabilising agent. If you would like information about the formulation of a specific lot, please contact our scientific support team who will be happy to help.

Purity	Immunogen affinity purified
Clonality	Polyclonal
Isotype	IgG

Applications

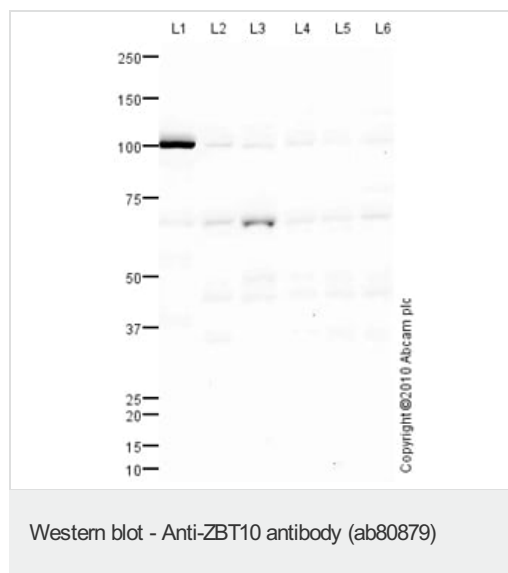
The Abpromise guarantee Our [Abpromise guarantee](#) covers the use of ab80879 in the following tested applications. The application notes include recommended starting dilutions; optimal dilutions/concentrations should be determined by the end user.

Application	Abreviews	Notes
WB		Use a concentration of 1 µg/ml. Detects a band of approximately 100 kDa (predicted molecular weight: 92 kDa).

Target

Function	May be involved in transcriptional regulation.
Sequence similarities	Contains 1 BTB (POZ) domain. Contains 2 C2H2-type zinc fingers.
Post-translational modifications	Phosphorylated upon DNA damage, probably by ATM or ATR.
Cellular localization	Nucleus.

Images



All lanes : Anti-ZBT10 antibody (ab80879) at 1 µg/ml

Lane 1 : Human liver tissue lysate - total protein ([ab29889](#))

Lane 2 : HeLa (Human epithelial carcinoma cell line) Whole Cell Lysate

Lane 3 : HepG2 (Human hepatocellular liver carcinoma cell line) Whole Cell Lysate

Lane 4 : HEK293 (Human embryonic kidney cell line) Whole Cell Lysate

Lane 5 : HUVEC (Human Umbilical Vein Endothelial Cell) Whole Cell Lysate

Lane 6 : SHSY-5Y (Human neuroblastoma cell line) Whole Cell Lysate

Lysates/proteins at 10 µg per lane.

Secondary

All lanes : Goat polyclonal to Rabbit IgG - H&L - Pre-Adsorbed

(HRP) at 1/3000 dilution

Developed using the ECL technique.

Performed under reducing conditions.

Predicted band size: 92 kDa

Observed band size: 100 kDa

Additional bands at: 46 kDa, 67 kDa (possible isoform). We are unsure as to the identity of these extra bands.

Exposure time: 20 minutes

ab80879 detects a strong band at 100 kDa which is thought to be the target protein as well as a band at 67 kDa. It is thought that the bands around 67 kDa corresponds to isoform 2 which has a predicted molecular weight of 65 kDa (SwissProt data).

Please note: All products are "FOR RESEARCH USE ONLY. NOT FOR USE IN DIAGNOSTIC PROCEDURES"

Our Abpromise to you: Quality guaranteed and expert technical support

- Replacement or refund for products not performing as stated on the datasheet
- Valid for 12 months from date of delivery
- Response to your inquiry within 24 hours

- We provide support in Chinese, English, French, German, Japanese and Spanish
- Extensive multi-media technical resources to help you
- We investigate all quality concerns to ensure our products perform to the highest standards

If the product does not perform as described on this datasheet, we will offer a refund or replacement. For full details of the Abpromise, please visit <https://www.abcam.com/abpromise> or contact our technical team.

Terms and conditions

- Guarantee only valid for products bought direct from Abcam or one of our authorized distributors