


Product datasheet

Anti-ZC3H11A antibody ab241612

3 Images

Overview

---

<b>Product name</b>	Anti-ZC3H11A antibody
<b>Description</b>	Rabbit polyclonal to ZC3H11A
<b>Host species</b>	Rabbit
<b>Tested applications</b>	<b>Suitable for:</b> WB, IP, IHC-P
<b>Species reactivity</b>	<b>Reacts with:</b> Human <b>Predicted to work with:</b> Orangutan 
<b>Immunogen</b>	Synthetic peptide within Human ZC3H11A aa 700-750. The exact sequence is proprietary. (NP_055642.3) Database link: <a href="#">O75152</a>
<b>Positive control</b>	WB: HeLa whole cell lysate. IP: HeLa whole cell lysate. IHC-P: Human prostate carcinoma tissue.
<b>General notes</b>	<p>Reproducibility is key to advancing scientific discovery and accelerating scientists' next breakthrough.</p> <p>Abcam is leading the way with our range of recombinant antibodies, knockout-validated antibodies and knockout cell lines, all of which support improved reproducibility.</p> <p>We are also planning to innovate the way in which we present recommended applications and species on our product datasheets, so that only applications &amp; species that have been tested in our own labs, our suppliers or by selected trusted collaborators are covered by our Abpromise™ guarantee.</p> <p>In preparation for this, we have started to update the applications &amp; species that this product is Abpromise guaranteed for.</p> <p>We are also updating the applications &amp; species that this product has been “predicted to work with,” however this information is not covered by our Abpromise guarantee.</p> <p>Applications &amp; species from publications and Abreviews that have not been tested in our own labs or in those of our suppliers are not covered by the Abpromise guarantee.</p> <p>Please check that this product meets your needs before purchasing. If you have any questions, special requirements or concerns, please send us an inquiry and/or contact our Support team ahead of purchase. Recommended alternatives for this product can be found below, as well as customer reviews and Q&amp;As.</p>

Properties

---

<b>Form</b>	Liquid
<b>Storage instructions</b>	Shipped at 4°C. Store at +4°C short term (1-2 weeks). Upon delivery aliquot. Store at -20°C long term. Avoid freeze / thaw cycle.
<b>Storage buffer</b>	pH: 6.8 Preservative: 0.09% Sodium azide Constituents: 0.1% BSA, Tris buffered saline
<b>Purity</b>	Immunogen affinity purified
<b>Purification notes</b>	Antibody was affinity purified using an epitope specific to ZC3H11A immobilized on solid support.
<b>Clonality</b>	Polyclonal
<b>Isotype</b>	IgG

## Applications

Our [Abpromise guarantee](#) covers the use of **ab241612** in the following tested applications.

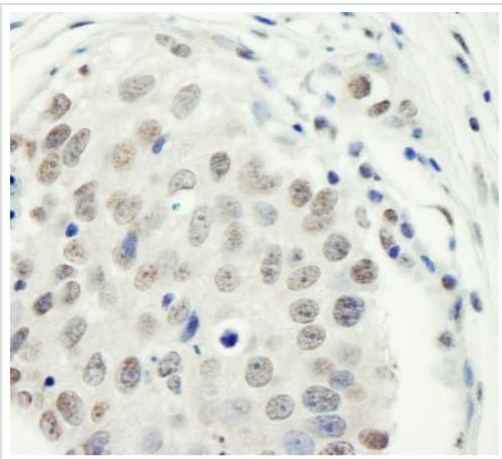
The application notes include recommended starting dilutions; optimal dilutions/concentrations should be determined by the end user.

Application	Abreviews	Notes
WB		1/2000 - 1/10000. Predicted molecular weight: 89 kDa.
IP		Use at 2-5 µg/mg of lysate.
IHC-P		1/200 - 1/1000. Perform heat mediated antigen retrieval with citrate buffer pH 6 before commencing with IHC staining protocol.

## Target

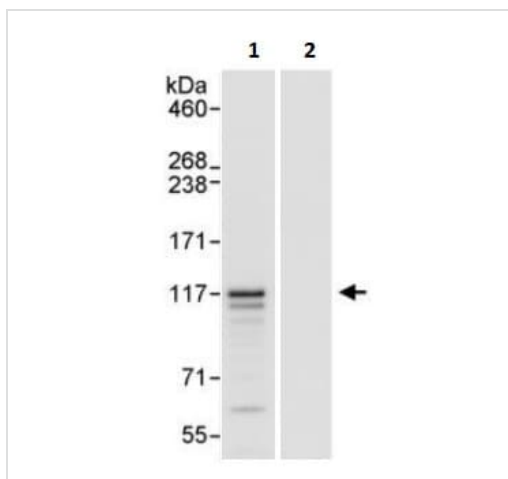
**Relevance** ZC3H11A, also known as zinc finger CCCH type containing 11A, contains 3 C3H1-type zinc fingers.

## Images



Immunohistochemistry (Formalin/PFA-fixed paraffin-embedded sections) - Anti-ZC3H11A antibody (ab241612)

Formalin-fixed, paraffin-embedded human prostate carcinoma tissue stained for ZC3H11A using ab241612 at 1/1000 dilution in immunohistochemical analysis. DAB staining.



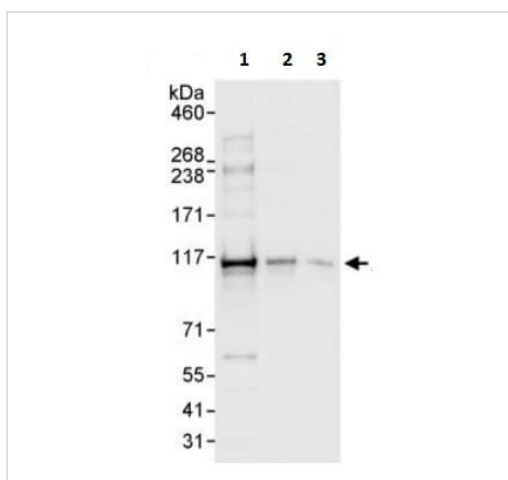
Immunoprecipitation - Anti-ZC3H11A antibody (ab241612)

ZC3H11A was immunoprecipitated from HeLa (human epithelial cell line from cervix adenocarcinoma) whole cell lysate (1 mg for IP, 20% of IP loaded) with ab241612 at 3 µg/mg lysate. Western blot was performed from the immunoprecipitate using ab241612 at 0.1 µg/ml.

**Lane 1:** ab241612 IP in HeLa whole cell lysate.

**Lane 2:** Control IgG IP in HeLa whole cell lysate.

Detection: Chemiluminescence with exposure time of 3 seconds.



Western blot - Anti-ZC3H11A antibody (ab241612)

**All lanes :** Anti-ZC3H11A antibody (ab241612) at 0.04 µg/ml

**Lane 1 :** HeLa (human epithelial cell line from cervix adenocarcinoma) cell lysate at 50 µg

**Lane 2 :** HeLa cell lysate at 15 µg

**Lane 3 :** HeLa cell lysate at 5 µg

Developed using the ECL technique.

**Predicted band size:** 89 kDa

**Exposure time:** 3 seconds

**Please note:** All products are "FOR RESEARCH USE ONLY. NOT FOR USE IN DIAGNOSTIC PROCEDURES"

### **Our Abpromise to you: Quality guaranteed and expert technical support**

---

- Replacement or refund for products not performing as stated on the datasheet
- Valid for 12 months from date of delivery
- Response to your inquiry within 24 hours
  
- We provide support in Chinese, English, French, German, Japanese and Spanish
- Extensive multi-media technical resources to help you
- We investigate all quality concerns to ensure our products perform to the highest standards

If the product does not perform as described on this datasheet, we will offer a refund or replacement. For full details of the Abpromise, please visit <https://www.abcam.com/abpromise> or contact our technical team.

### **Terms and conditions**

---

- Guarantee only valid for products bought direct from Abcam or one of our authorized distributors