

Product datasheet

Anti-ZDHHC1 antibody ab223042

3 Images

Overview

<b>Product name</b>	Anti-ZDHHC1 antibody
<b>Description</b>	Rabbit polyclonal to ZDHHC1
<b>Host species</b>	Rabbit
<b>Tested applications</b>	<b>Suitable for:</b> WB, IHC-P, ICC/IF
<b>Species reactivity</b>	<b>Reacts with:</b> Mouse, Human
<b>Immunogen</b>	Recombinant fragment corresponding to Human ZDHHC1 aa 283-389. Sequence:  VQHRPPQEAKGVHRELESCPPKMRPIQEMEFYMRTFRH MRPEPPGQAGPA AVNAKHSRPASPDPTPGRRDCAGPPVQVEWDRKKPLP WRSPLLLLAMWGP QAPPCLC

Database link: [Q8WTX9](#)

 [Run BLAST with](#)

 [Run BLAST with](#)

**Positive control** WB: Mouse spleen tissue lysate. IHC-P: Human prostate cancer tissue. ICC/IF: A549 cells.

**General notes**

Reproducibility is key to advancing scientific discovery and accelerating scientists' next breakthrough.

Abcam is leading the way with our range of recombinant antibodies, knockout-validated antibodies and knockout cell lines, all of which support improved reproducibility.

We are also planning to innovate the way in which we present recommended applications and species on our product datasheets, so that only applications & species that have been tested in our own labs, our suppliers or by selected trusted collaborators are covered by our Abpromise™ guarantee.

In preparation for this, we have started to update the applications & species that this product is Abpromise guaranteed for.

We are also updating the applications & species that this product has been “predicted to work with,” however this information is not covered by our Abpromise guarantee.

Applications & species from publications and Abreviews that have not been tested in our own labs or in those of our suppliers are not covered by the Abpromise guarantee.

Please check that this product meets your needs before purchasing. If you have any questions, special requirements or concerns, please send us an inquiry and/or contact our Support team ahead of purchase. Recommended alternatives for this product can be found below, as well as

customer reviews and Q&As.

## Properties

---

<b>Form</b>	Liquid
<b>Storage instructions</b>	Shipped at 4°C. Store at +4°C short term (1-2 weeks). Upon delivery aliquot. Store at -20°C long term. Avoid freeze / thaw cycle.
<b>Storage buffer</b>	pH: 7.40 Constituents: 50% Glycerol (glycerin, glycerine), PBS, 0.03% Proclin 300
<b>Purity</b>	Protein G purified
<b>Purification notes</b>	Purity >95%
<b>Clonality</b>	Polyclonal
<b>Isotype</b>	IgG

## Applications

---

Our [Abpromise guarantee](#) covers the use of **ab223042** in the following tested applications.

The application notes include recommended starting dilutions; optimal dilutions/concentrations should be determined by the end user.

Application	Abreviews	Notes
WB		1/1000 - 1/5000. Predicted molecular weight: 55 kDa.
IHC-P		1/20 - 1/200.
ICC/IF		1/50 - 1/200.

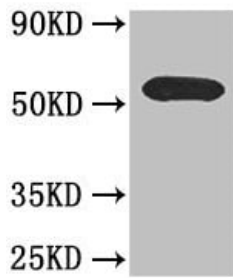
## Target

---

<b>Tissue specificity</b>	Expressed at high levels in fetal lung, kidney and heart. Expressed at lower levels in adult pancreas and lung.
<b>Sequence similarities</b>	Belongs to the DHHC palmitoyltransferase family. Contains 1 DHHC-type zinc finger.
<b>Domain</b>	The DHHC domain is required for palmitoyltransferase activity.
<b>Cellular localization</b>	Membrane.

## Images

---



Western blot - Anti-ZDHHC1 antibody (ab223042)

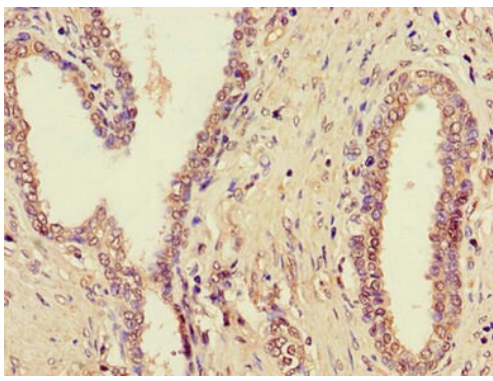
Anti-ZDHHC1 antibody (ab223042) at 1/1000 dilution + Mouse spleen tissue lysate

**Secondary**

Goat Anti-Rabbit IgG at 1/50000 dilution

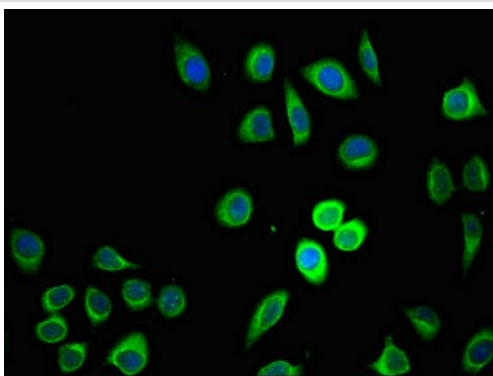
**Predicted band size:** 55 kDa

**Observed band size:** 55 kDa



Immunohistochemistry (Formalin/PFA-fixed paraffin-embedded sections) - Anti-ZDHHC1 antibody (ab223042)

Paraffin-embedded human prostate cancer tissue stained for ZDHHC1 using ab223042 at 1/100 dilution in immunohistochemical analysis.



Immunocytochemistry/ Immunofluorescence - Anti-ZDHHC1 antibody (ab223042)

A549 (human lung carcinoma cell line) cells stained for ZDHHC1 (green) using ab223042 at 1/100 dilution in ICC/IF. Secondary: Alexa Fluor 488-conjugated Goat Anti-Rabbit IgG(H+L).

**Please note:** All products are "FOR RESEARCH USE ONLY. NOT FOR USE IN DIAGNOSTIC PROCEDURES"

## **Our Abpromise to you: Quality guaranteed and expert technical support**

---

- Replacement or refund for products not performing as stated on the datasheet
- Valid for 12 months from date of delivery
- Response to your inquiry within 24 hours
  
- We provide support in Chinese, English, French, German, Japanese and Spanish
- Extensive multi-media technical resources to help you
- We investigate all quality concerns to ensure our products perform to the highest standards

If the product does not perform as described on this datasheet, we will offer a refund or replacement. For full details of the Abpromise, please visit <https://www.abcam.com/abpromise> or contact our technical team.

## **Terms and conditions**

---

- Guarantee only valid for products bought direct from Abcam or one of our authorized distributors