

## Product datasheet

# Anti-ZEB1 antibody ab124512

23 References 4 Images

### Overview

---

<b>Product name</b>	Anti-ZEB1 antibody
<b>Description</b>	Rabbit polyclonal to ZEB1
<b>Host species</b>	Rabbit
<b>Specificity</b>	ab124512 is predicted not to crossreact with ZEB2.
<b>Tested applications</b>	<b>Suitable for:</b> ICC/IF, WB, ICC
<b>Species reactivity</b>	<b>Reacts with:</b> Human
<b>Immunogen</b>	Synthetic peptide corresponding to Human ZEB1 (internal sequence). Database link: <a href="#">P37275</a>
<b>Positive control</b>	WB: HeLa whole cell lysate ( <a href="#">ab150035</a> ). ICC: HeLa and K562 cells.
<b>General notes</b>	<p>Reproducibility is key to advancing scientific discovery and accelerating scientists' next breakthrough.</p> <p>Abcam is leading the way with our range of recombinant antibodies, knockout-validated antibodies and knockout cell lines, all of which support improved reproducibility.</p> <p>We are also planning to innovate the way in which we present recommended applications and species on our product datasheets, so that only applications &amp; species that have been tested in our own labs, our suppliers or by selected trusted collaborators are covered by our Abpromise™ guarantee.</p> <p>In preparation for this, we have started to update the applications &amp; species that this product is Abpromise guaranteed for.</p> <p>We are also updating the applications &amp; species that this product has been “predicted to work with,” however this information is not covered by our Abpromise guarantee.</p> <p>Applications &amp; species from publications and Abreviews that have not been tested in our own labs or in those of our suppliers are not covered by the Abpromise guarantee.</p> <p>Please check that this product meets your needs before purchasing. If you have any questions, special requirements or concerns, please send us an inquiry and/or contact our Support team ahead of purchase. Recommended alternatives for this product can be found below, as well as customer reviews and Q&amp;As.</p>

### Properties

---

<b>Form</b>	Liquid
-------------	--------

<b>Storage instructions</b>	Shipped at 4°C. Store at +4°C short term (1-2 weeks). Upon delivery aliquot. Store at -20°C. Avoid freeze / thaw cycle.
<b>Storage buffer</b>	pH: 7.2 Preservative: 0.02% Sodium azide Constituent: 99% PBS
<b>Purity</b>	Immunogen affinity purified
<b>Clonality</b>	Polyclonal
<b>Isotype</b>	IgG

## Applications

Our [Abpromise guarantee](#) covers the use of **ab124512** in the following tested applications.

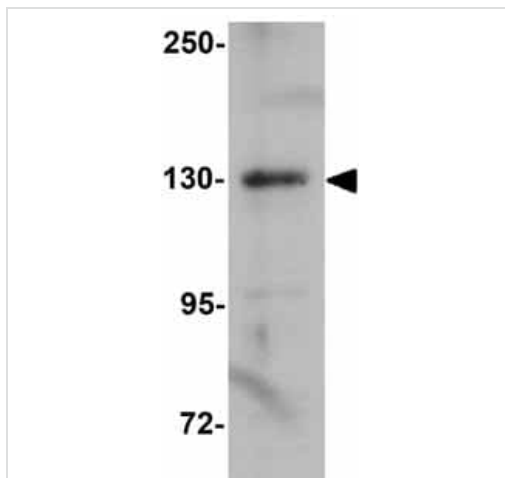
The application notes include recommended starting dilutions; optimal dilutions/concentrations should be determined by the end user.

Application	Abreviews	Notes
ICC/IF		Use a concentration of 20 µg/ml.
WB		Use a concentration of 1 - 2 µg/ml. Predicted molecular weight: 124 kDa.
ICC		Use a concentration of 20 µg/ml.

## Target

<b>Function</b>	Inhibits interleukin-2 (IL-2) gene expression. May be responsible for transcriptional repression of the IL-2 gene. Enhances or represses the promoter activity of the ATP1A1 gene depending on the quantity of cDNA and on the cell type. Represses E-cadherin promoter and induces an epithelial-mesenchymal transition (EMT) by recruiting SMARCA4/BRG1. Represses BCL6 transcription in the presence of the corepressor CTBP1. Promotes tumorigenicity by repressing stemness-inhibiting microRNAs.
<b>Tissue specificity</b>	Colocalizes with SMARCA4/BRG1 in E-cadherin-negative cells from established lines, and stroma of normal colon as well as in de-differentiated epithelial cells at the invasion front of colorectal carcinomas (at protein level). Expressed in heart and skeletal muscle, but not in liver, spleen, or pancreas.
<b>Involvement in disease</b>	Defects in ZEB1 are the cause of posterior polymorphous corneal dystrophy type 3 (PPCD3) [MIM:609141]. PPCD is a rare disease involving metaplasia and overgrowth of corneal endothelial cells. In patients with PPCD, these cells manifest in an epithelial morphology and gene expression pattern, produce an aberrant basement membrane, and, sometimes, spread over the iris and nearby structures in a way that increases the risk for glaucoma. Defects in ZEB1 are the cause of corneal dystrophy Fuchs endothelial type 6 (FECD6) [MIM:613270]. It is an ocular disorder caused by loss of endothelium of the central cornea. It is characterized by focal wart-like guttata that arise from Descemet membrane and develop in the central cornea, epithelial blisters, reduced vision and pain. Descemet membrane is thickened by abnormal collagenous deposition.
<b>Sequence similarities</b>	Belongs to the delta-EF1/ZFH-1 C2H2-type zinc-finger family. Contains 7 C2H2-type zinc fingers. Contains 1 homeobox DNA-binding domain.

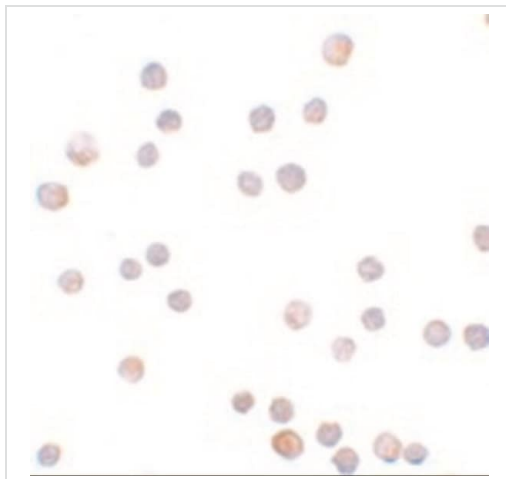
## Images



Western blot - Anti-ZEB1 antibody (ab124512)

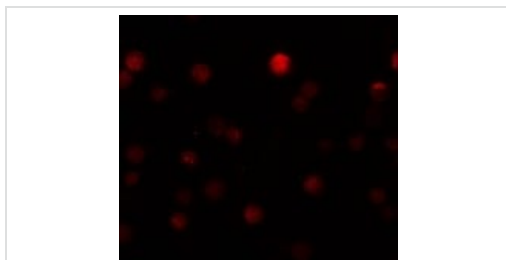
Anti-ZEB1 antibody (ab124512) at 1  $\mu$ g/ml + HeLa cell lysate at 15  $\mu$ g

**Predicted band size:** 124 kDa



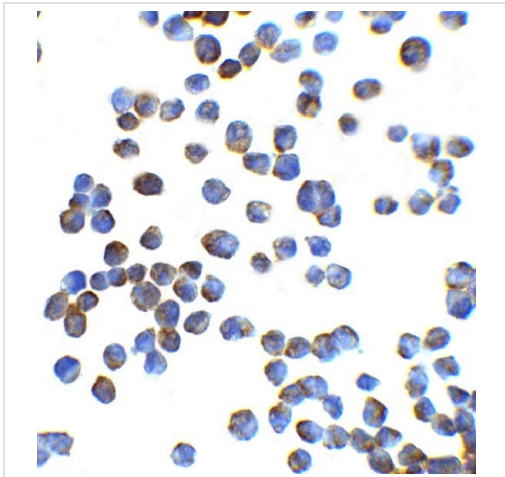
Immunocytochemistry - Anti-ZEB1 antibody (ab124512)

Immunocytochemistry of HeLa cells labeling ZEB1 with Anti-ZEB1 antibody (ab124512) at 20  $\mu$ g/ml.



Immunocytochemistry/ Immunofluorescence - Anti-ZEB1 antibody (ab124512)

Immunocytochemistry/Immunofluorescence of ZEB1 in HeLa cells using ab124512 at 20  $\mu$ g/ml.



Immunocytochemical analysis of K562 cells labelling ZEB1 with ab124512 at 2.5µg/mL.

Immunocytochemistry - Anti-ZEB1 antibody  
(ab124512)

**Please note:** All products are "FOR RESEARCH USE ONLY. NOT FOR USE IN DIAGNOSTIC PROCEDURES"

#### **Our Abpromise to you: Quality guaranteed and expert technical support**

---

- Replacement or refund for products not performing as stated on the datasheet
- Valid for 12 months from date of delivery
- Response to your inquiry within 24 hours
- We provide support in Chinese, English, French, German, Japanese and Spanish
- Extensive multi-media technical resources to help you
- We investigate all quality concerns to ensure our products perform to the highest standards

If the product does not perform as described on this datasheet, we will offer a refund or replacement. For full details of the Abpromise, please visit <https://www.abcam.com/abpromise> or contact our technical team.

#### **Terms and conditions**

---

- Guarantee only valid for products bought direct from Abcam or one of our authorized distributors