

Product datasheet

Anti-ZEB1 antibody ab155249

[3 References](#) [2 Images](#)

Overview

Product name	Anti-ZEB1 antibody
Description	Rabbit polyclonal to ZEB1
Host species	Rabbit
Tested applications	Suitable for: WB, ICC/IF
Species reactivity	Reacts with: Human
Immunogen	Recombinant fragment corresponding to Human ZEB1 aa 254-586 (internal sequence). Database link: P37275
Positive control	WB: 293T and HeLa whole cell lysates. ICC/IF: HeLa cells.

Properties

Form	Liquid
Storage instructions	Shipped at 4°C. Upon delivery aliquot. Store at -20°C or -80°C. Avoid freeze / thaw cycle.
Storage buffer	pH: 7.00 Preservative: 0.01% Thimerosal (merthiolate) Constituents: 79% PBS, 20% Glycerol
Purity	Immunogen affinity purified
Clonality	Polyclonal
Isotype	IgG

Applications

Our [Abpromise guarantee](#) covers the use of **ab155249** in the following tested applications.

The application notes include recommended starting dilutions; optimal dilutions/concentrations should be determined by the end user.

Application	Abreviews	Notes
WB		1/500 - 1/3000. Predicted molecular weight: 124 kDa.
ICC/IF		1/100 - 1/1000.

Target

Function

Inhibits interleukin-2 (IL-2) gene expression. May be responsible for transcriptional repression of the IL-2 gene. Enhances or represses the promoter activity of the ATP1A1 gene depending on the quantity of cDNA and on the cell type. Represses E-cadherin promoter and induces an epithelial-mesenchymal transition (EMT) by recruiting SMARCA4/BRG1. Represses BCL6 transcription in the presence of the corepressor CTBP1. Promotes tumorigenicity by repressing stemness-inhibiting microRNAs.

Tissue specificity

Colocalizes with SMARCA4/BRG1 in E-cadherin-negative cells from established lines, and stroma of normal colon as well as in de-differentiated epithelial cells at the invasion front of colorectal carcinomas (at protein level). Expressed in heart and skeletal muscle, but not in liver, spleen, or pancreas.

Involvement in disease

Defects in ZEB1 are the cause of posterior polymorphous corneal dystrophy type 3 (PPCD3) [MIM:609141]. PPCD is a rare disease involving metaplasia and overgrowth of corneal endothelial cells. In patients with PPCD, these cells manifest in an epithelial morphology and gene expression pattern, produce an aberrant basement membrane, and, sometimes, spread over the iris and nearby structures in a way that increases the risk for glaucoma.

Defects in ZEB1 are the cause of corneal dystrophy Fuchs endothelial type 6 (FECD6) [MIM:613270]. It is an ocular disorder caused by loss of endothelium of the central cornea. It is characterized by focal wart-like guttata that arise from Descemet membrane and develop in the central cornea, epithelial blisters, reduced vision and pain. Descemet membrane is thickened by abnormal collagenous deposition.

Sequence similarities

Belongs to the delta-EF1/ZFH-1 C2H2-type zinc-finger family.

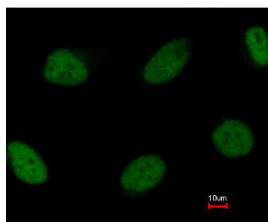
Contains 7 C2H2-type zinc fingers.

Contains 1 homeobox DNA-binding domain.

Cellular localization

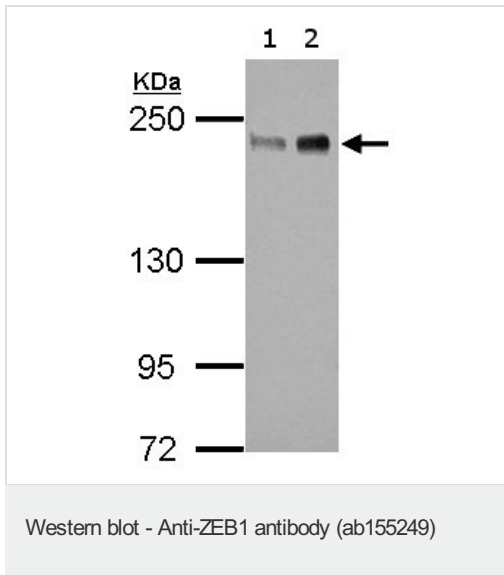
Nucleus.

Images



Immunocytochemistry/Immunofluorescence analysis of paraformaldehyde-fixed HeLa cells labeling ZEB1 with ab155249 at 1/1000 dilution. Lower image shows cells co-stained with Hoechst 33342.

Immunocytochemistry/ Immunofluorescence - Anti-ZEB1 antibody (ab155249)



All lanes : Anti-ZEB1 antibody (ab155249) at 1/1000 dilution

Lane 1 : 293T whole cell lysate

Lane 2 : HeLa whole cell lysate

Lysates/proteins at 30 µg per lane.

Predicted band size: 124 kDa

5% SDS PAGE.

Please note: All products are "FOR RESEARCH USE ONLY AND ARE NOT INTENDED FOR DIAGNOSTIC OR THERAPEUTIC USE"

Our Abpromise to you: Quality guaranteed and expert technical support

- Replacement or refund for products not performing as stated on the datasheet
- Valid for 12 months from date of delivery
- Response to your inquiry within 24 hours
- We provide support in Chinese, English, French, German, Japanese and Spanish
- Extensive multi-media technical resources to help you
- We investigate all quality concerns to ensure our products perform to the highest standards

If the product does not perform as described on this datasheet, we will offer a refund or replacement. For full details of the Abpromise, please visit <https://www.abcam.com/abpromise> or contact our technical team.

Terms and conditions

- Guarantee only valid for products bought direct from Abcam or one of our authorized distributors