

Product datasheet

Anti-ZFR antibody ab272572

3 Images

Overview

Product name	Anti-ZFR antibody
Description	Rabbit polyclonal to ZFR
Host species	Rabbit
Tested applications	Suitable for: IHC-P, ICC/IF, WB
Species reactivity	Reacts with: Human
Immunogen	Recombinant fragment corresponding to Human ZFR aa 450-600. Database link: Q96KR1 Run BLAST with Run BLAST with
Positive control	WB: K562 cell lysate. IHC-P: Human pancreas tissue. ICC/IF: U-251 MG.
General notes	The Life Science industry has been in the grips of a reproducibility crisis for a number of years. Abcam is leading the way in addressing this with our range of recombinant monoclonal antibodies and knockout edited cell lines for gold-standard validation. Please check that this product meets your needs before purchasing. If you have any questions, special requirements or concerns, please send us an inquiry and/or contact our Support team ahead of purchase. Recommended alternatives for this product can be found below, along with publications, customer reviews and Q&As

Properties

Form	Liquid
Storage instructions	Shipped at 4°C. Store at +4°C short term (1-2 weeks). Upon delivery aliquot. Store at -20°C long term. Avoid freeze / thaw cycle.
Storage buffer	pH: 7.20 Preservative: 0.02% Sodium azide Constituents: 40% Glycerol (glycerin, glycerine), PBS
Purity	Immunogen affinity purified
Clonality	Polyclonal
Isotype	IgG

Applications

The Abpromise guarantee

Our [Abpromise guarantee](#) covers the use of ab272572 in the following tested applications.

The application notes include recommended starting dilutions; optimal dilutions/concentrations should be determined by the end user.

Application	Abreviews	Notes
IHC-P		1/20 - 1/50. Perform heat mediated antigen retrieval with citrate buffer pH 6 before commencing with IHC staining protocol.
ICC/IF		Use a concentration of 0.25 - 2 µg/ml.
WB		Use a concentration of 0.04 - 0.4 µg/ml.

Target

Function

Involved in postimplantation and gastrulation stages of development. Involved in the nucleocytoplasmic shuttling of STAU2. Binds to DNA and RNA.

Tissue specificity

Expressed in lung, liver, lymphocytes, heart, pancreas, placenta, brain and kidney.

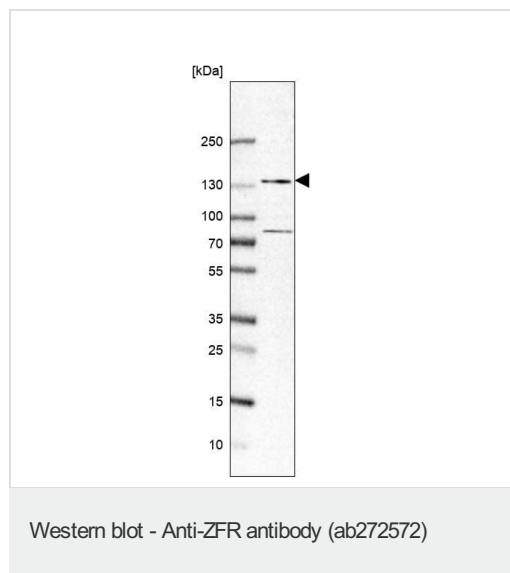
Sequence similarities

Contains 1 DZF domain.

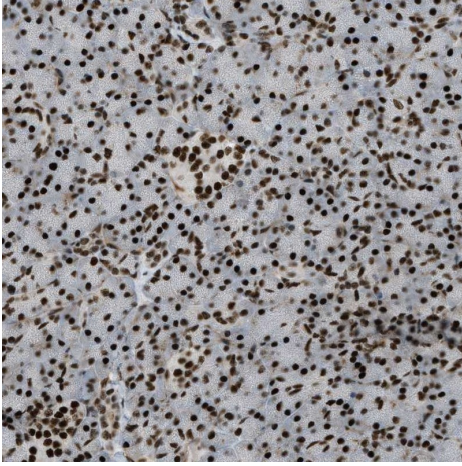
Cellular localization

Nucleus. Cytoplasm. Cytoplasmic granule. Chromosome. Associated with chromosome foci in meiotic cells. Localizes in somatodendritic compartment of primary hippocampal neurons. Colocalizes with STAU2 in several cytosolic RNA granules.

Images

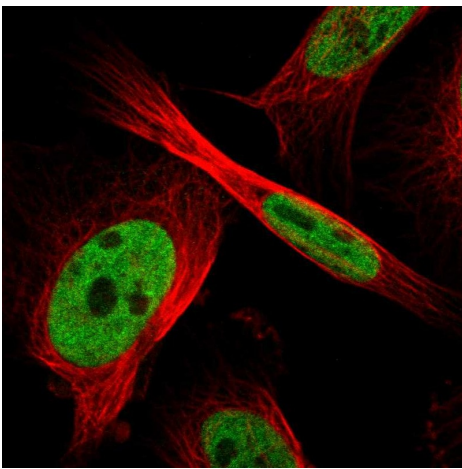


Anti-ZFR antibody (ab272572) at 0.04 µg/ml + K562 (Human chronic myelogenous leukemia lymphoblast cell line) whole cell lysate



Paraffin-embedded formalin-fixed Human pancreas tissue stained for ZFR using ab272572 at 1/50 in immunohistochemical analysis.

Immunohistochemistry (Formalin/PFA-fixed paraffin-embedded sections) - Anti-ZFR antibody (ab272572)



PFA fixed, Triton X-100 permeabilized human cell line U-251 MG labeling ZFR (green) using ab272572 at 2 ug/ml in ICC/IF analysis.

Immunocytochemistry/ Immunofluorescence - Anti-ZFR antibody (ab272572)

Please note: All products are "FOR RESEARCH USE ONLY. NOT FOR USE IN DIAGNOSTIC PROCEDURES"

Our Abpromise to you: Quality guaranteed and expert technical support

- Replacement or refund for products not performing as stated on the datasheet
- Valid for 12 months from date of delivery
- Response to your inquiry within 24 hours

- We provide support in Chinese, English, French, German, Japanese and Spanish
- Extensive multi-media technical resources to help you
- We investigate all quality concerns to ensure our products perform to the highest standards

If the product does not perform as described on this datasheet, we will offer a refund or replacement. For full details of the Abpromise, please visit <https://www.abcam.com/abpromise> or contact our technical team.

Terms and conditions

- Guarantee only valid for products bought direct from Abcam or one of our authorized distributors