




Product datasheet

Anti-Zhangfei antibody ab221095

1 Image

Overview

Product name	Anti-Zhangfei antibody
Description	Rabbit polyclonal to Zhangfei
Host species	Rabbit
Tested applications	Suitable for: ICC/IF
Species reactivity	Reacts with: Human Predicted to work with: Mouse, Rat 
Immunogen	Recombinant fragment corresponding to Human Zhangfei aa 292-352. Sequence: TTSLFRDSPAGDHDYALPVGKQKQDLLEEDDSAGGV CLHVDKDKVSVEFC SACARKASSSL Database link: Q9NS37  Run BLAST with  Run BLAST with
Positive control	HeLa cells.

Properties

Form	Liquid
Storage instructions	Shipped at 4°C. Store at +4°C short term (1-2 weeks). Upon delivery aliquot. Store at -20°C long term. Avoid freeze / thaw cycle.
Storage buffer	pH: 7.2 Preservative: 0.02% Sodium azide Constituents: 40% Glycerol, 59% PBS
Purity	Immunogen affinity purified
Clonality	Polyclonal
Isotype	IgG

Applications

Our [Abpromise guarantee](#) covers the use of **ab221095** in the following tested applications.

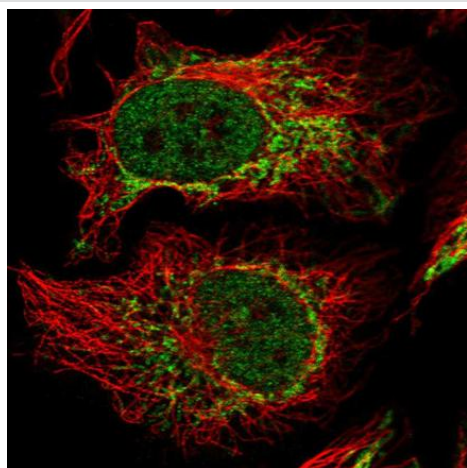
The application notes include recommended starting dilutions; optimal dilutions/concentrations should be determined by the end user.

Application	Abreviews	Notes
ICC/IF		Use a concentration of 1 - 4 µg/ml. Fixation/Permeabilization: PFA/Triton X-100.

Target

Function	Strongly activates transcription when bound to HCFC1. Suppresses the expression of HSV proteins in cells infected with the virus in a HCFC1-dependent manner. Also suppresses the HCFC1-dependent transcriptional activation by CREB3 and reduces the amount of CREB3 in the cell. Able to down-regulate expression of some cellular genes in CREBZF-expressing cells.
Tissue specificity	In adults, expressed most abundantly in heart, liver and skeletal muscle, moderately abundant in kidney and pancreas, and barely detectable in lung. In fetal tissues, expressed most abundantly in kidney and very low amounts in heart, lung and liver.
Sequence similarities	Belongs to the bZIP family, ATF subfamily. Contains 1 bZIP domain.
Cellular localization	Nucleus. Colocalizes at punctate nuclear structures with CREB3 and HCFC1.

Images



Immunofluorescent analysis of PFA-fixed, Triton X-100 permeabilized HeLa cells labeling Zhangfei with ab221095 at 4 µg/ml (green).

Immunocytochemistry/ Immunofluorescence - Anti-Zhangfei antibody (ab221095)

Please note: All products are "FOR RESEARCH USE ONLY. NOT FOR USE IN DIAGNOSTIC PROCEDURES"

Our Abpromise to you: Quality guaranteed and expert technical support

- Replacement or refund for products not performing as stated on the datasheet
- Valid for 12 months from date of delivery

- Response to your inquiry within 24 hours
- We provide support in Chinese, English, French, German, Japanese and Spanish
- Extensive multi-media technical resources to help you
- We investigate all quality concerns to ensure our products perform to the highest standards

If the product does not perform as described on this datasheet, we will offer a refund or replacement. For full details of the Abpromise, please visit <https://www.abcam.com/abpromise> or contact our technical team.

Terms and conditions

- Guarantee only valid for products bought direct from Abcam or one of our authorized distributors