

Product datasheet

Anti-Zinc Alpha 2 Glycoprotein antibody ab47116

2 References 1 Image

Overview

Product name	Anti-Zinc Alpha 2 Glycoprotein antibody
Description	Rabbit polyclonal to Zinc Alpha 2 Glycoprotein
Host species	Rabbit
Specificity	This antibody is specific for Zinc Alpha 2 Glycoprotein.
Tested applications	Suitable for: WB
Species reactivity	Reacts with: Human
Immunogen	Recombinant human Zinc Alpha 2 Glycoprotein. 278 amino acid residues of the human ZA2G and 12 additional amino acid residues. Source of immunogen, 293 cell line (Human embryonic kidney)
Positive control	Human serum
General notes	<p>The Life Science industry has been in the grips of a reproducibility crisis for a number of years. Abcam is leading the way in addressing this with our range of recombinant monoclonal antibodies and knockout edited cell lines for gold-standard validation. Please check that this product meets your needs before purchasing.</p> <p>If you have any questions, special requirements or concerns, please send us an inquiry and/or contact our Support team ahead of purchase. Recommended alternatives for this product can be found below, along with publications, customer reviews and Q&As</p>

Properties

Form	Liquid
Storage instructions	Shipped at 4°C. Store at +4°C short term (1-2 weeks). Upon delivery aliquot. Store at -20°C or -80°C. Avoid freeze / thaw cycle.
Storage buffer	Constituents: 0.134% PBS, 0.58% Sodium chloride
Purity	Immunogen affinity purified
Purification notes	Immunoaffinity chromatography on a column with immobilized recombinant human Zinc Alpha 2 Glycoprotein.
Clonality	Polyclonal
Isotype	IgG

Applications

The Abpromise guarantee

Our [Abpromise guarantee](#) covers the use of ab47116 in the following tested applications.

The application notes include recommended starting dilutions; optimal dilutions/concentrations should be determined by the end user.

Application	Abreviews	Notes
WB		Use a concentration of 1 µg/ml. Predicted molecular weight: 34 kDa.

Target

Function

Stimulates lipid degradation in adipocytes and causes the extensive fat losses associated with some advanced cancers. May bind polyunsaturated fatty acids.

Tissue specificity

Blood plasma, seminal plasma, urine, saliva, sweat, epithelial cells of various human glands, liver.

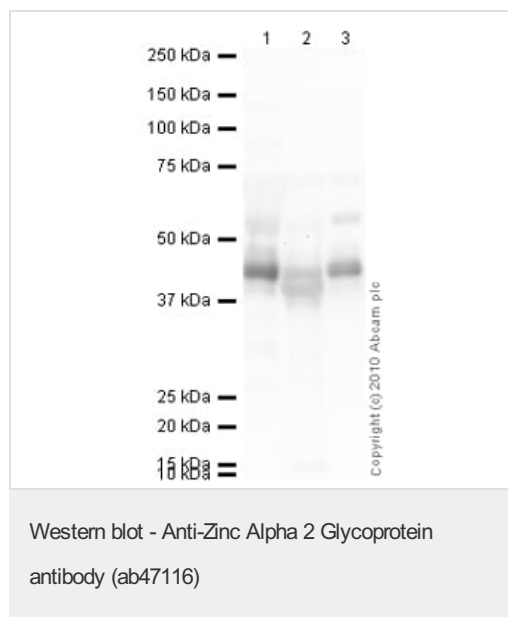
Sequence similarities

Belongs to the MHC class I family.
Contains 1 Ig-like C1-type (immunoglobulin-like) domain.

Cellular localization

Secreted.

Images



All lanes : Anti-Zinc Alpha 2 Glycoprotein antibody (ab47116) at 1 µg/ml

Lane 1 : Human Plasma Total Protein Lysate

Lane 2 : Human liver tissue lysate - total protein ([ab29889](#))

Lane 3 : Human testis tissue lysate - total protein ([ab30257](#))

Lysates/proteins at 10 µg per lane.

Secondary

All lanes : Goat Anti-Rabbit IgG H&L (HRP) preadsorbed ([ab97080](#)) at 1/5000 dilution

Developed using the ECL technique.

Performed under reducing conditions.

Predicted band size: 34 kDa

Observed band size: 43 kDa

Additional bands at: 55 kDa. We are unsure as to the identity of these extra bands.

Exposure time: 30 seconds

Please note: All products are "FOR RESEARCH USE ONLY. NOT FOR USE IN DIAGNOSTIC PROCEDURES"

Our Abpromise to you: Quality guaranteed and expert technical support

- Replacement or refund for products not performing as stated on the datasheet
- Valid for 12 months from date of delivery
- Response to your inquiry within 24 hours

- We provide support in Chinese, English, French, German, Japanese and Spanish
- Extensive multi-media technical resources to help you
- We investigate all quality concerns to ensure our products perform to the highest standards

If the product does not perform as described on this datasheet, we will offer a refund or replacement. For full details of the Abpromise, please visit <https://www.abcam.com/abpromise> or contact our technical team.

Terms and conditions

- Guarantee only valid for products bought direct from Abcam or one of our authorized distributors