

Product datasheet

Anti-ZMYM2/RAMP antibody ab106624

1 References 1 Image

Overview

Product name	Anti-ZMYM2/RAMP antibody
Description	Rabbit polyclonal to ZMYM2/RAMP
Host species	Rabbit
Specificity	At least three isoforms of ZMYM2/RAMP are known to exist; ab106624 will detect only the longest isoform. It is predicted to not cross react with other ZMYM protein family members.
Tested applications	Suitable for: WB
Species reactivity	Reacts with: Mouse
Immunogen	Synthetic peptide corresponding to Human ZMYM2/RAMP (N terminal). (CAH71822)
Positive control	EL4 cell lysate
General notes	This product was previously labelled as ZMYM2

The Life Science industry has been in the grips of a reproducibility crisis for a number of years. Abcam is leading the way in addressing this with our range of recombinant monoclonal antibodies and knockout edited cell lines for gold-standard validation. Please check that this product meets your needs before purchasing.

If you have any questions, special requirements or concerns, please send us an inquiry and/or contact our Support team ahead of purchase. Recommended alternatives for this product can be found below, along with publications, customer reviews and Q&As

Properties

Form	Liquid
Storage instructions	Shipped at 4°C. Store at 4°C (stable for up to 12 months).
Storage buffer	pH: 7.2 Preservative: 0.02% Sodium azide Constituent: PBS
Purity	Immunogen affinity purified
Clonality	Polyclonal
Isotype	IgG

Applications

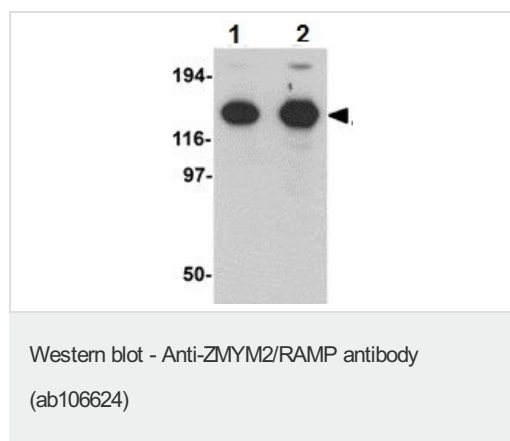
The Abpromise guarantee Our [Abpromise guarantee](#) covers the use of ab106624 in the following tested applications. The application notes include recommended starting dilutions; optimal dilutions/concentrations should be determined by the end user.

Application	Abreviews	Notes
WB		Use a concentration of 0.125 - 0.25 µg/ml. Predicted molecular weight: 155 kDa.

Target

Function	May function as a transcription factor.
Involvement in disease	Note=A chromosomal aberration involving ZMYM2 may be a cause of stem cell leukemia lymphoma syndrome (SCLL). Translocation t(8;13)(p11;q12) with FGFR1. SCLL usually presents as lymphoblastic lymphoma in association with a myeloproliferative disorder, often accompanied by pronounced peripheral eosinophilia and/or prominent eosinophilic infiltrates in the affected bone marrow.
Sequence similarities	Contains 9 MYM-type zinc fingers.
Cellular localization	Nucleus.
Form	There are 2 isoforms produced by alternative splicing.

Images



Lane 1 : Anti-ZMYM2/RAMP antibody (ab106624) at 0.125 µg/ml

Lane 2 : Anti-ZMYM2/RAMP antibody (ab106624) at 0.25 µg/ml

All lanes : EL4 cell lysate

Lysates/proteins at 15 µg per lane.

Predicted band size: 155 kDa

Please note: All products are "FOR RESEARCH USE ONLY. NOT FOR USE IN DIAGNOSTIC PROCEDURES"

Our Abpromise to you: Quality guaranteed and expert technical support

- Replacement or refund for products not performing as stated on the datasheet
- Valid for 12 months from date of delivery
- Response to your inquiry within 24 hours
- We provide support in Chinese, English, French, German, Japanese and Spanish

- Extensive multi-media technical resources to help you
- We investigate all quality concerns to ensure our products perform to the highest standards

If the product does not perform as described on this datasheet, we will offer a refund or replacement. For full details of the Abpromise, please visit <https://www.abcam.com/abpromise> or contact our technical team.

Terms and conditions

- Guarantee only valid for products bought direct from Abcam or one of our authorized distributors