

Product datasheet

Anti-ZNF695 antibody ab237811

3 Images

Overview

<b>Product name</b>	Anti-ZNF695 antibody
<b>Description</b>	Rabbit polyclonal to ZNF695
<b>Host species</b>	Rabbit
<b>Tested applications</b>	<b>Suitable for:</b> ICC/IF, IHC-P
<b>Species reactivity</b>	<b>Reacts with:</b> Human
<b>Immunogen</b>	Recombinant full length protein corresponding to Human ZNF695 aa 1-88. Sequence: MGLLAFRDVALEFSPEEWECLDPAQRSLYRDVMLEN YRNLISLGEDSFNM QFLFHSLAMSKPELIICLEARKEPWNVNTEKTARHSVM  Database link: <a href="#">Q8IW36-3</a>  <a href="#">Run BLAST with</a> <a href="#">Run BLAST with</a>
<b>Positive control</b>	IHC-P: Human bladder cancer and cervical cancer tissues. ICC/IF: HeLa cells.

Properties

<b>Form</b>	Liquid
<b>Storage instructions</b>	Shipped at 4°C. Store at +4°C short term (1-2 weeks). Upon delivery aliquot. Store at -20°C long term. Avoid freeze / thaw cycle.
<b>Storage buffer</b>	pH: 7.40 Preservative: 0.03% Proclin Constituents: 50% Glycerol, PBS
<b>Purity</b>	Protein G purified
<b>Purification notes</b>	Purity greater than 95%.
<b>Clonality</b>	Polyclonal
<b>Isotype</b>	IgG

Applications

Our [Abpromise guarantee](#) covers the use of **ab237811** in the following tested applications.

The application notes include recommended starting dilutions; optimal dilutions/concentrations should be determined by the end user.

Application	Abreviews	Notes
ICC/IF		1/50 - 1/200.
IHC-P		1/20 - 1/200.

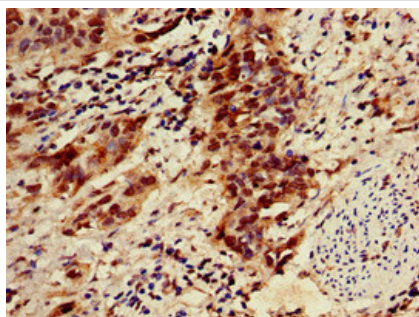
## Target

**Function** May be involved in transcriptional regulation.

**Sequence similarities** Contains 13 C2H2-type zinc fingers.  
Contains 1 KRAB domain.

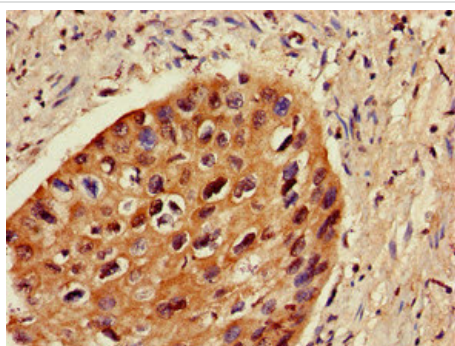
**Cellular localization** Nucleus.

## Images



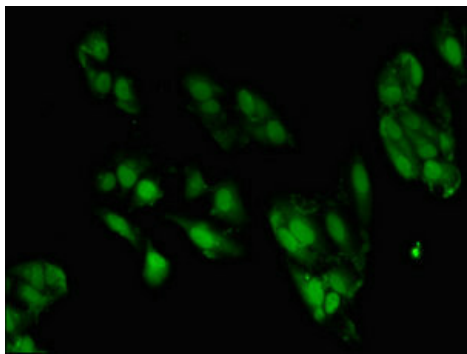
Paraffin-embedded human bladder cancer tissue stained for ZNF695 using ab237811 at 1/100 dilution in immunohistochemical analysis.

Immunohistochemistry (Formalin/PFA-fixed paraffin-embedded sections) - Anti-ZNF695 antibody (ab237811)



Paraffin-embedded human cervical cancer tissue stained for ZNF695 using ab237811 at 1/100 dilution in immunohistochemical analysis.

Immunohistochemistry (Formalin/PFA-fixed paraffin-embedded sections) - Anti-ZNF695 antibody (ab237811)



Immunocytochemistry/ Immunofluorescence - Anti-ZNF695 antibody (ab237811)

HeLa (human epithelial cell line from cervix adenocarcinoma) cells stained for ZNF695 (green) using ab237811 at 1/100 dilution in ICC/IF, followed by Alexa Fluor 488-conjugated goat anti-rabbit IgG (H+L).

**Please note:** All products are "FOR RESEARCH USE ONLY. NOT FOR USE IN DIAGNOSTIC PROCEDURES"

### Our Abpromise to you: Quality guaranteed and expert technical support

---

- Replacement or refund for products not performing as stated on the datasheet
- Valid for 12 months from date of delivery
- Response to your inquiry within 24 hours
  
- We provide support in Chinese, English, French, German, Japanese and Spanish
- Extensive multi-media technical resources to help you
- We investigate all quality concerns to ensure our products perform to the highest standards

If the product does not perform as described on this datasheet, we will offer a refund or replacement. For full details of the Abpromise, please visit <https://www.abcam.com/abpromise> or contact our technical team.

### Terms and conditions

---

- Guarantee only valid for products bought direct from Abcam or one of our authorized distributors