



Product datasheet

Anti-ZWINT antibody ab229692

3 Images

Overview

<b>Product name</b>	Anti-ZWINT antibody
<b>Description</b>	Rabbit polyclonal to ZWINT
<b>Host species</b>	Rabbit
<b>Tested applications</b>	<b>Suitable for:</b> IHC-P, WB
<b>Species reactivity</b>	<b>Reacts with:</b> Mouse, Human
<b>Immunogen</b>	<p>Recombinant full length protein corresponding to Human ZWINT aa 1-277. Sequence:</p> <pre> MEAAETEAEAAALEVLAEVAGILEPVGLQEEAELPAKI LVEFVVDSQKKD KLLCSQLQVADFLQNILAQEDTAKGLDPLASEDTSRQ KAIAAKEQWKELK ATYREHVEAIKIGLTKALTQMEEAQRKRTLREAFEQL QAKKQMAMEKRR AVQNQWQLQQEKHLQHLAEVSAEVRERKTGTQQELD RVFQKLGNLKQQAE QERDKLQRYQTFLQLLYTLQGKLLFPEAEAEAENLPD DKPQQPTRPQEQS TGDTMGRDPGVSFKAVGLQPAGDVNLP </pre> <p>Database link: <a href="#">O95229</a></p> <p style="text-align: right;">  <a href="#">Run BLAST with</a>       <a href="#">Run BLAST with</a> </p>
<b>Positive control</b>	WB: HeLa whole cell lysate ( <a href="#">ab150035</a> ); Mouse liver tissue lysate. IHC-P: Human ovarian cancer and testis tissues.

Properties

<b>Form</b>	Liquid
<b>Storage instructions</b>	Shipped at 4°C. Store at +4°C short term (1-2 weeks). Upon delivery aliquot. Store at -20°C long term. Avoid freeze / thaw cycle.
<b>Storage buffer</b>	<p>pH: 7.3 Preservative: 0.02% Sodium azide Constituents: PBS, 50% Glycerol</p>

<b>Purity</b>	Immunogen affinity purified
<b>Clonality</b>	Polyclonal
<b>Isotype</b>	IgG

## Applications

Our [Abpromise guarantee](#) covers the use of **ab229692** in the following tested applications.

The application notes include recommended starting dilutions; optimal dilutions/concentrations should be determined by the end user.

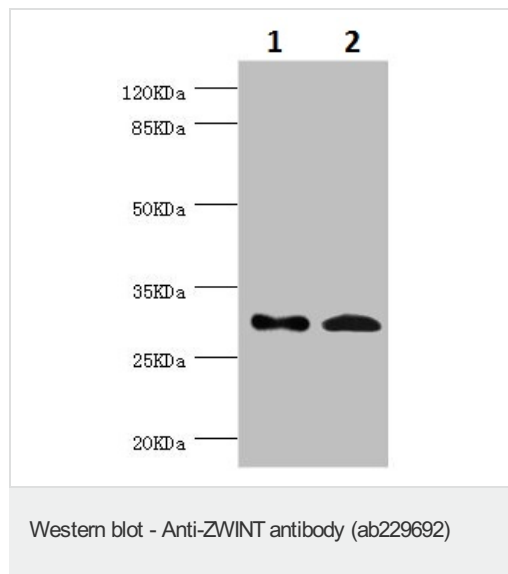
Application	Abreviews	Notes
IHC-P		1/20 - 1/200.
WB		1/1000 - 1/5000. Predicted molecular weight: 31 kDa.

## Target

**Function** Part of the MIS12 complex, which is required for kinetochore formation and spindle checkpoint activity. Required to target ZW10 to the kinetochore at prometaphase.

**Cellular localization** Nucleus. Chromosome > centromere > kinetochore. Localizes to kinetochores from late prophase to anaphase.

## Images



**All lanes** : Anti-ZWINT antibody (ab229692) at 1/1000 dilution

**Lane 1** : HeLa (human epithelial cell line from cervix adenocarcinoma) whole cell lysate

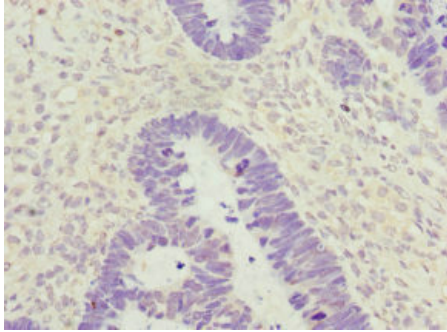
**Lane 2** : Mouse liver tissue lysate

### Secondary

**All lanes** : Goat anti-rabbit IgG at 1/10000 dilution

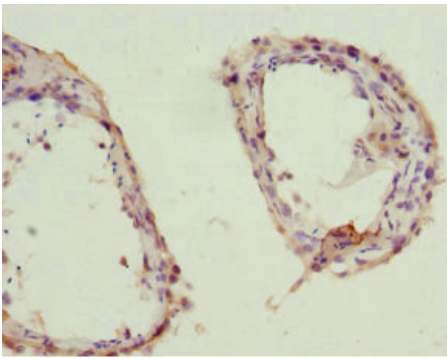
**Predicted band size:** 31 kDa

**Observed band size:** 31 kDa



Paraffin-embedded human ovarian cancer tissue stained for ZWINT using ab229692 at 1/100 dilution in immunohistochemical analysis.

Immunohistochemistry (Formalin/PFA-fixed paraffin-embedded sections) - Anti-ZWINT antibody (ab229692)



Paraffin-embedded human testis tissue stained for ZWINT using ab229692 at 1/100 dilution in immunohistochemical analysis.

Immunohistochemistry (Formalin/PFA-fixed paraffin-embedded sections) - Anti-ZWINT antibody (ab229692)

**Please note:** All products are "FOR RESEARCH USE ONLY. NOT FOR USE IN DIAGNOSTIC PROCEDURES"

### **Our Abpromise to you: Quality guaranteed and expert technical support**

---

- Replacement or refund for products not performing as stated on the datasheet
- Valid for 12 months from date of delivery
- Response to your inquiry within 24 hours
  
- We provide support in Chinese, English, French, German, Japanese and Spanish
- Extensive multi-media technical resources to help you
- We investigate all quality concerns to ensure our products perform to the highest standards

If the product does not perform as described on this datasheet, we will offer a refund or replacement. For full details of the Abpromise,

please visit <https://www.abcam.com/abpromise> or contact our technical team.

## **Terms and conditions**

---

- Guarantee only valid for products bought direct from Abcam or one of our authorized distributors